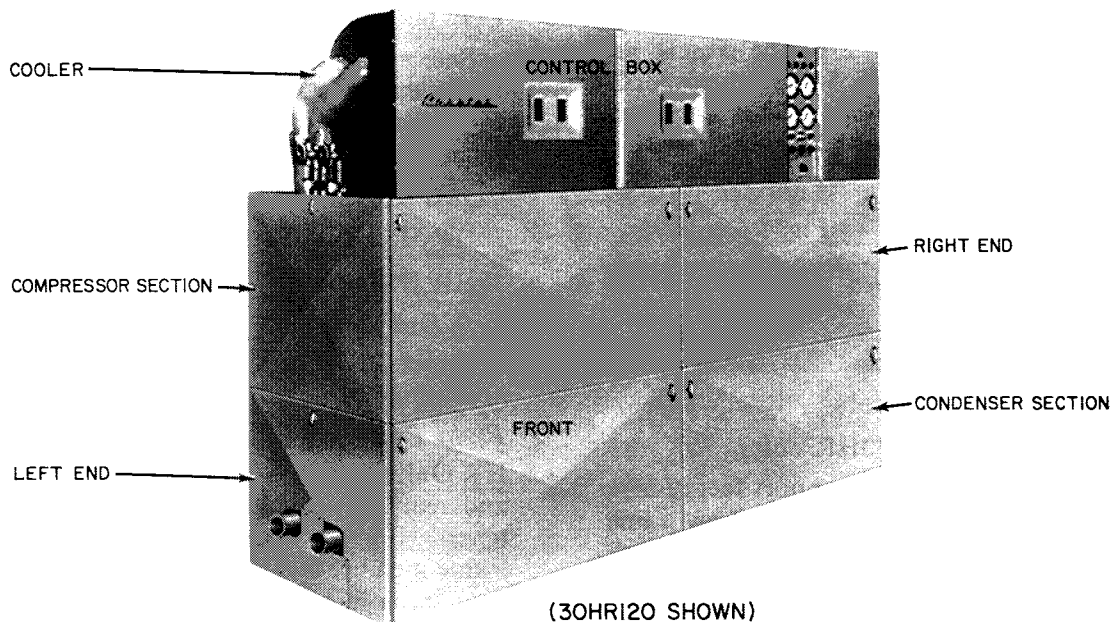


Accessory Package — Enclosure Panels



TYPICAL INSTALLATION

INTRODUCTION

These instructions cover installation of accessory enclosure panels on 30HR,HS070-160 Models C and D. The package contains all the panels and hardware to complete the installation.

Check each item for shipping damage. If any damage is found, file a claim with the shipping agent immediately. If any item is missing, or if any part does not assemble properly, notify your Carrier distributor.

PACKAGE INDEX

UNIT 30(HR,HS)		PACKAGE NUMBER	PACKAGE CONTENTS
070-090	HR	30HR902143	Table 1
	HS	30HS902143	
100-120	HR	30HR901143	Table 2
	HS	30HS901143	
140	HR	30HR904143	Table 3
160		30HR905143	
140,160	HS	30HS904143	

INSTALLATION

Nomenclature — In these instructions, descriptions of units and locations of enclosure panels are identified as follows: LEFT END, RIGHT END, FRONT, REAR as viewed facing the unit control box.

TOP — Top of unit frame, immediately under the cooler. Cooler is mounted on this surface.

COMPRESSOR AND CONDENSER SECTIONS — refer to illustration on page 1.

Top Panels — Install top panels first so that the front, rear and ends will be open for access to the working area. The insulation is on the *bottom side* of the panels.

Top panel arrangements are shown in Fig. 1, 2, 3. Install filler strips first. These pieces lie lengthwise, against the control box. At the outer end of each strip, as shown in Fig. 1, 2, 3, drill a 5/16 in. (8 mm) hole thru the strip and frame member. Secure the strips with furnished fasteners shown in Fig. 4.

Lay the top panels in position as shown in the applicable illustration (Fig. 1, 2 or 3), with the inner edges resting on the filler strips. Drill 5/16 in. (8 mm) holes thru panels and frame member at points shown. Secure panels with furnished fasteners shown in Fig. 4. Fasten at additional points if necessary.

On 30HS models, it is necessary to cut out areas to accommodate filter drier brackets, which are mounted on the frame.

It may be necessary to trim existing slots in the panels to allow for capillaries and cables. *Be sure sufficient clearance is provided in these areas to keep capillaries and cables from contacting sharp edges.*

Install Latches — Front and rear panels (Fig. 6) and end panels (Fig. 7 and 9) require latches (Fig. 5).

At each latch mounting hole, cut out a square of insulation approximately 2 in. x 2 in. (51 mm x 51 mm).

CONDENSER SECTION, FRONT AND REAR PANELS

Mount latches in the holes 5 in. (127 mm) down from the top (4 panels). Assemble latches as shown in Fig. 5A.

COMPRESSOR SECTION, FRONT AND REAR PANELS

On all 4 panels, mount latches in holes 2 in. (51 mm) down from top. On 2 of the panels, assemble latches as shown in Fig. 5A; on the other 2, assemble latches as shown in Fig. 5B (these panels are installed below the control box).

END PANELS

Assemble latches as shown in Fig. 5A.

IMPORTANT: When panels are installed, be sure latch engagement is snug. Adjust if necessary (see Fig. 5).

Install Front and Rear Panels

CONDENSER SECTION (30HR only)

Attach panels to frame with support feet resting on frame member. With a felt-tip pen, draw a line on the frame member along the top of each panel. Remove the panels and attach seal strips approximately centered on the drawn lines. The top edges of the panels should bear into the seal strips.

COMPRESSOR SECTION

Panels with latches assembled as in Fig. 5B go below control box. Apply seal strips as on condenser section for all front and rear panels.

On all 30HS units and on 30HR units with accessory oil safety switches, cut out a piece of insulation over each oil switch reset button to avoid contact with the buttons. *When panels are in place, be sure the buttons are clear.* When panels are in place, the insulation may contact the capillaries

from the switches to the compressors. *Use care when installing these panels to avoid damaging the capillaries.*

30HS Only, Rear Panels — It is necessary to modify one rear panel to accommodate the discharge piping. Cut out the areas shown in Fig. 6.

Install End Panels

CONDENSER SECTION (30HR only)

Select panels from the table in Fig. 7 and mount on the designated ends. Select the panel covers from Fig. 8 and attach to the respective panels with the furnished #10 S.M. screws.

COMPRESSOR SECTION

30HR,HS070-120 — Both ends are the same (Fig. 9).

30HR,HS140,160

Left End

Upper left corner of panel is cut out (Fig. 9) to accommodate suction piping.

Right End

HR Only (Fig. 10) — Remove 2 upper panels (front and rear) to provide access for attaching end fasteners. Hold left panel in position against the corner frame member and drill three 5/16-in. (8-mm) holes thru frame member using holes in panel as a template. Attach panel, using furnished fasteners (same as for top panels; see Fig. 4). Do not tighten. Hold right panel in position against corner frame member, overlapping left panel as shown in Fig. 10, with screw holes aligned. Fasten the panels together with furnished 1/4-in. S.M. screws. Do not tighten. Attach right panel to frame, same as left panel. Tighten all mounting fasteners, making sure that the piping passing thru the panel assembly does not contact any sharp edges. Reinstall the 2 panels that were removed.

HS Only — Use plain panel, Fig. 9.

Table 1 — Package Contents; 30HR,HS070,080,090 (See Note)

ITEM NO.	DESCRIPTION	NO. REQ.	CARRIER PART NO.
30HR and 30HS			
1	Top Filler Strip, Right End	1	30HR402162
2	Top Filler Strip, Left End	1	30HR402172
3	Top Panel, Outer (Left End)	1	30HR402082
4	Top Panel, Center	1	30HR402073
5	Top Panel, Outer (Right End)	1	30HR402092
6	Front or Rear Panel	8/4*	30HR070-643
7	End Panel, Compressor Section	2	30HR070-683
8	Latch Assembly	20/10*	KA07NL060
9	Hex Hd Screw, 1/4-20 x 3/4 in. (19 mm) Lg	8	AA06BS168
10	Plain Washer, 1/4 in.	8	AU01AB171
11	Spring Lock Washer, 1/4 in.	8	AU11AS171
12	Hex Nut, 1/4-20	8	AT39AA171
13	Adhesive Strip, 1/2 in. x 1/2 in. (13 mm x 13 mm)	†	QR10-2
30HR ONLY (CONDENSER SECTION)			
14	End Panel } Left End	1	30HR070-673
15	End Cover } Left End	1	30HR070-2223
16	End Panel } Right End	1	30HR070-663
17	End Cover } Right End	1	30HR070-2213
18	Pan Hd, Type B, S.M. Screw #10 x 3/8 in. (9.5 mm) Lg	12	AL72AB215

*30HR/30HS

†30HR: 50 ft (15.24 m); 30HS: 25 ft (7.62 m)

NOTE: Package No. ...(HR) 30HR902143

(HS) 30HS902143

Table 2 — Package Contents; 30HR,HS100,110,120 (See Note)

ITEM NO.	DESCRIPTION	NO. REQ.	CARRIER PART NO.
30HR and 30HS			
1	Top Filler Strip, Right	1	30HR502182
2	Top Filler Strip, Left	1	30HR502212
3	Top Panel, Outer (Left End)	1	30HR401943
4	Top Panel, Inner	1	30HR401863
5	Top Panel, Inner	1	30HR401933
6	Top Panel, Outer (Right End)	1	30HR401923
7	Front or Rear Panel	8/4*	30HR100-643
8	End Panel, Compressor Section	2	30HR070-683
9	Latch Assembly	20/10*	KA07NL060
10	Hex Hd Screw, 1/4-20 x 3/4 in. (19 mm) Lg	10	AA06BS168
11	Plain Washer, 1/4 in.	10	AU01AB171
12	Spring Lock Washer, 1/4 in.	10	AU11AS171
13	Hex Nut, 1/4-20	10	AT39AA171
14	Adhesive Strip, 1/2 in. x 1/2 in. (13 mm x 13 mm)	†	QR10-2
30HR ONLY (CONDENSER SECTION)			
15	End Panel } Left End	1	30HR070-673
16	End Cover } Left End	1	30HR070-2223
17	End Panel } Right End	1	30HR070-663
18	End Cover } Right End	1	30HR070-2213
19	Pan Hd, Type B, S.M. Screw #10 x 3/8 in. (9.5 mm) Lg	12	AL72AB215

*30HR/30HS

†30HR: 50 ft (15.24 m); 30HS: 25 ft (7.62 m)

NOTE: Package No. ... (HR) 30HR901143
(HS) 30HS901143

Table 3 — Package Contents; 30HR,HS140,160 (See Note)

ITEM NO.	DESCRIPTION	NO. REQ.	CARRIER PART NO.
A-30HR,HS140 and 160			
1	Top Filler Strip	2	30HR402282
2	Top Panel, Outer (Right End)	1	30HR402302
3	Top Panel, Inner	1	30HR402322
4	Top Panel, Inner	1	30HR402332
5	Top Panel, Outer (Left End)	1	30HR402312
6	Front or Rear Panel	8/4*	30HR100-643
7	End Panel, Left End (HR,HS) } Compressor	1	30HR402173
8	End Panel, Right End (HS only) } Section	1	30HR070-683
9	Latch Assembly	19/10*	KA07NL060
10	Hex Hd Screw, 1/4-20 x 3/4 in. (19 mm) Lg	16/10*	AA06BS168
11	Plain Washer, 1/4 in.	16/10*	AU01AB171
12	Spring Lock Washer, 1/4 in.	16/10*	AU11AS171
13	Hex Nut, 1/4-20	16/10*	AT39AA171
14	Adhesive Strip, 1/2 in. x 1/2 in. (13 mm x 13 mm)	†	QR10-2
B-30HR140			
15	Slotted Hex Hd, Type B, S.M. Screw 1/4 in. x 1/2 in. (13 mm) Lg	4	AL76AU306
16	End Panel (1/2) } Compressor Section, Right End	1	30HR402362
17	End Panel (1/2) } Compressor Section, Right End	1	30HR402372
18	End Panel } Condenser Section, Left End	1	30HR070-673
19	End Cover } Condenser Section, Left End	1	30HR070-2223
20	End Panel } Condenser Section, Right End	1	30HR070-663
21	End Cover } Condenser Section, Right End	1	30HR070-2213
22	Pan Hd, Type B, S.M. Screw #10 x 3/8 in. (9.5 mm) Lg	12	AL72AB215
C-30HR160			
15	Slotted Hex Hd, Type B, S.M. Screw 1/4 in x 1/2 in. (13 mm) Lg	4	AL76AU306
16	End Panel (1/2) } Compressor Section, Right End	1	30HR402362
17	End Panel (1/2) } Compressor Section, Right End	1	30HR402372
18	End Panel } Condenser Section, Left End	1	30HR160-673
19	End Cover } Condenser Section, Left End	1	30HR160-2223
20	End Panel } Condenser Section, Right End	1	30HR160-663
21	End Cover } Condenser Section, Right End	1	30HR160-2213
22	Pan Hd, Type B, S.M. Screw #10 x 3/8 in. (9.5 mm) Lg	12	AL72AB215

*30HR/30HS

†30HR: 50 ft (15.24 m)

30HS: 25 ft (7.62 m)

NOTE: Package Numbers

30HR140 — 30HR904143(A+B)

30HR160 — 30HR905143(A+C)

30HS140,160 — 30HS904143(A)

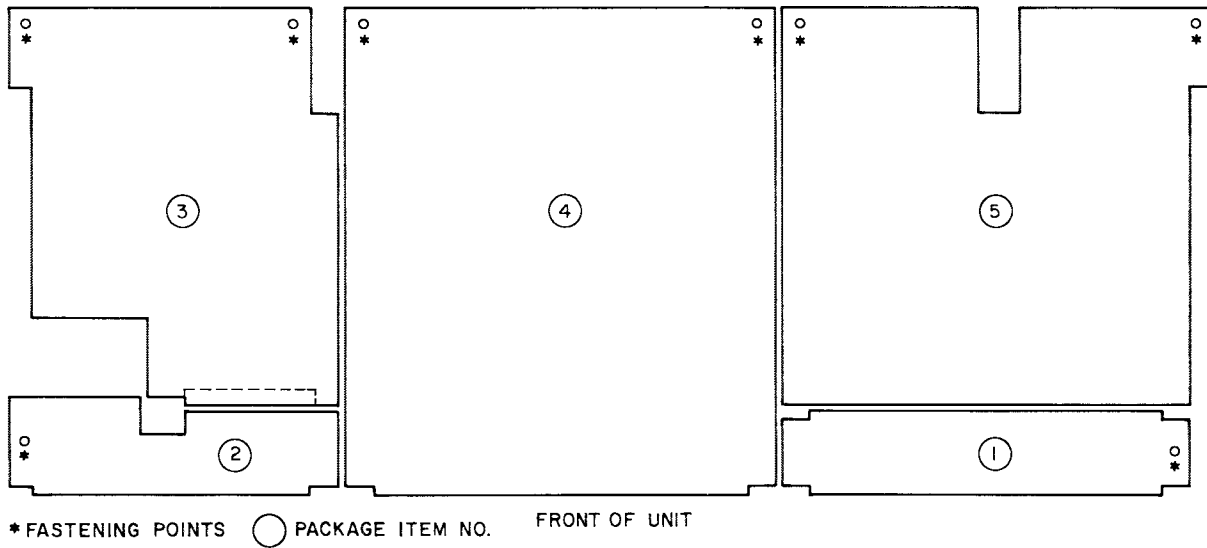


Fig. 1 — Top Panels; 30HR,HS070-090

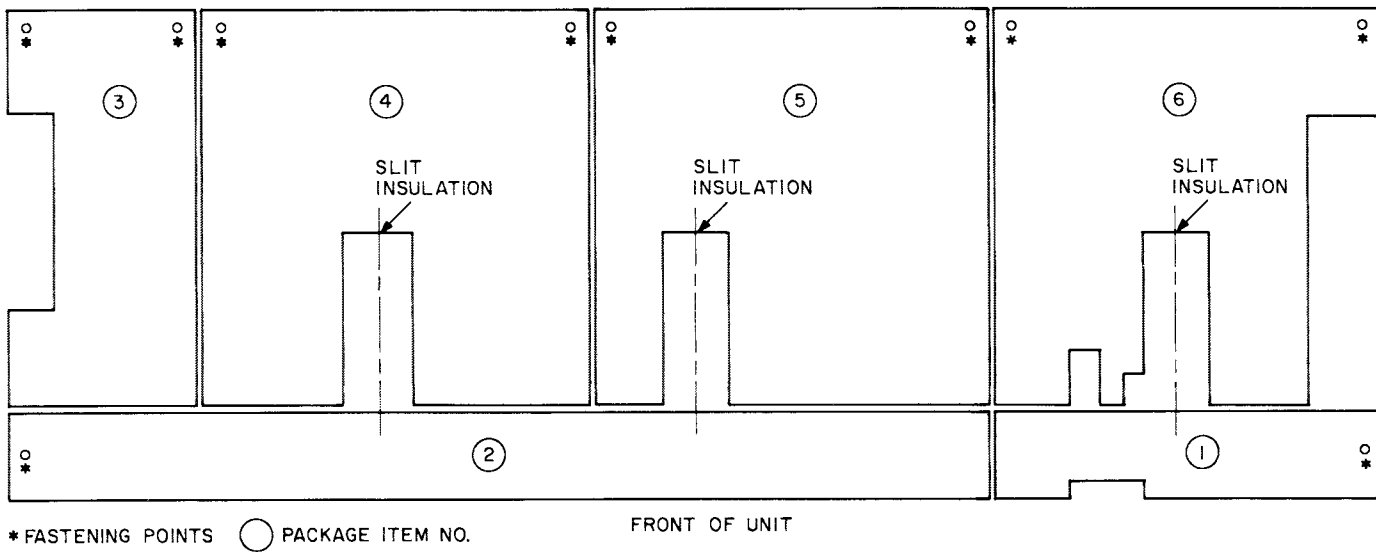


Fig. 2 — Top Panels; 30HR,HS100-120

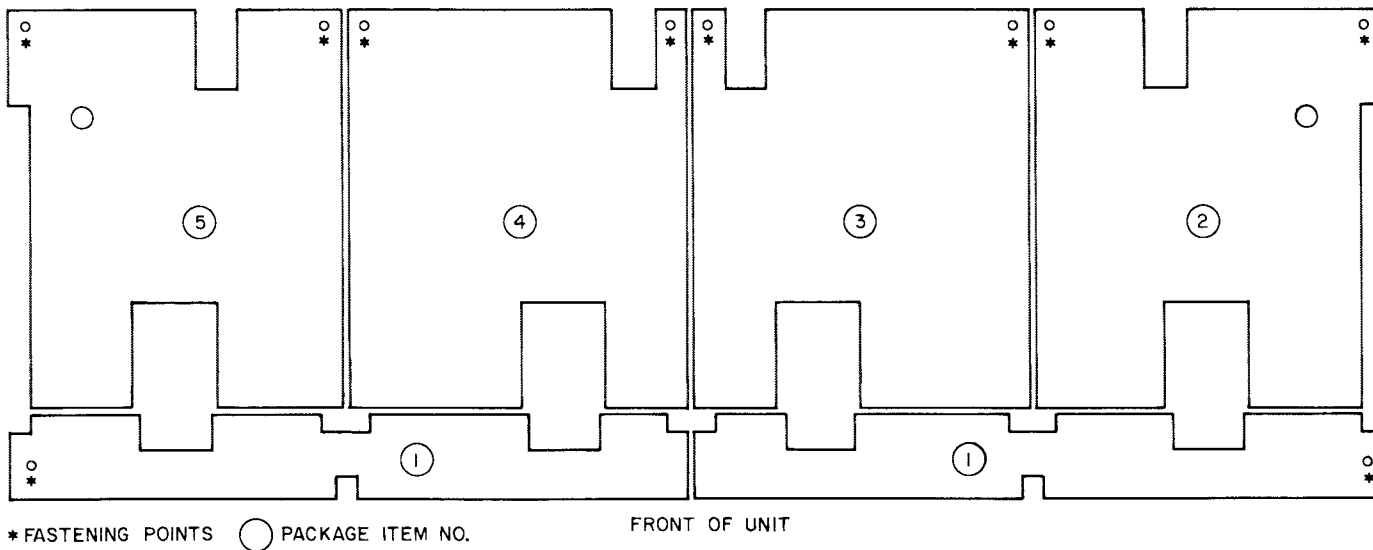
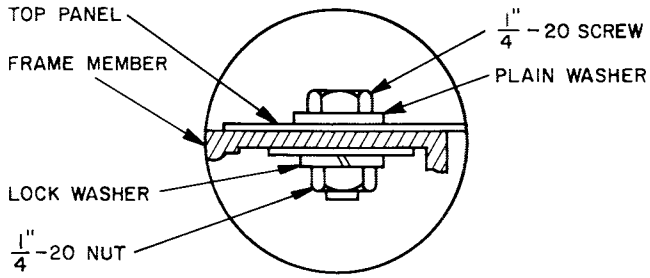


Fig. 3 — Top Panels; 30HR,HS140,160



Also for panel assembly at right end of compressor section, 30HR140,160

Fig. 4 — Typical Top Panel Mounting

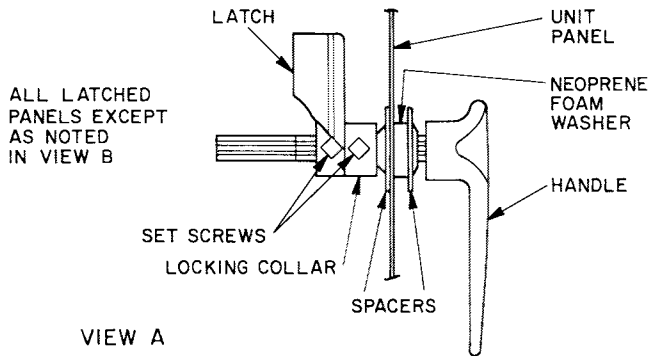


Fig. 5 — Latch Assembly

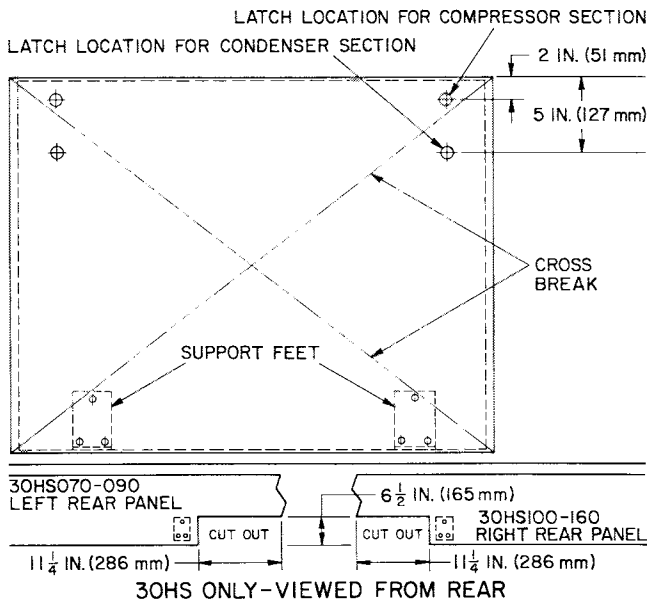
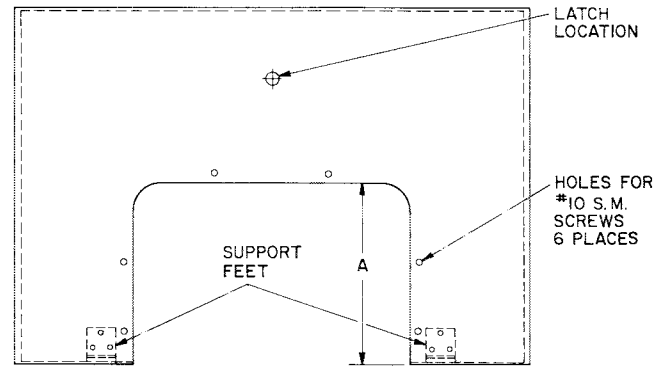
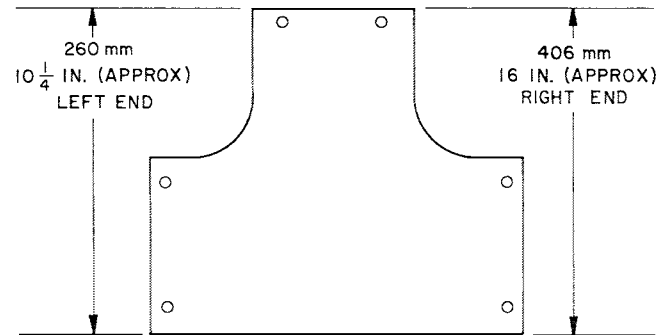


Fig. 6 — Typical Front and Rear Panel



30HR	DIM "A" (APPROX)	
	Left End	Right End
070-140	9½ in. (241 mm)	15¼ in. (387 mm)
160	16¼ in. (413 mm)	13⅝ in. (333 mm)

Fig. 7 — End Panel, Condenser Section



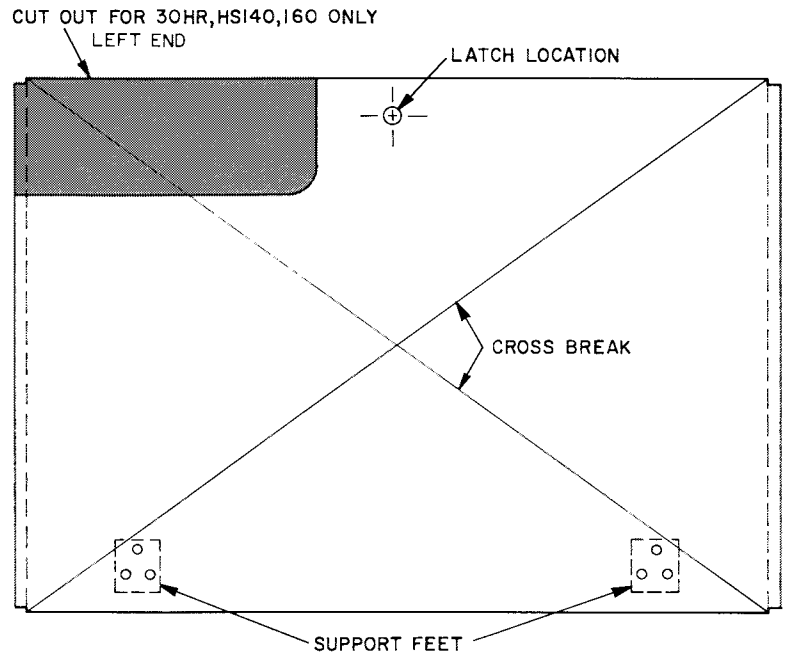
30HR070-140

RIGHT END

LEFT END

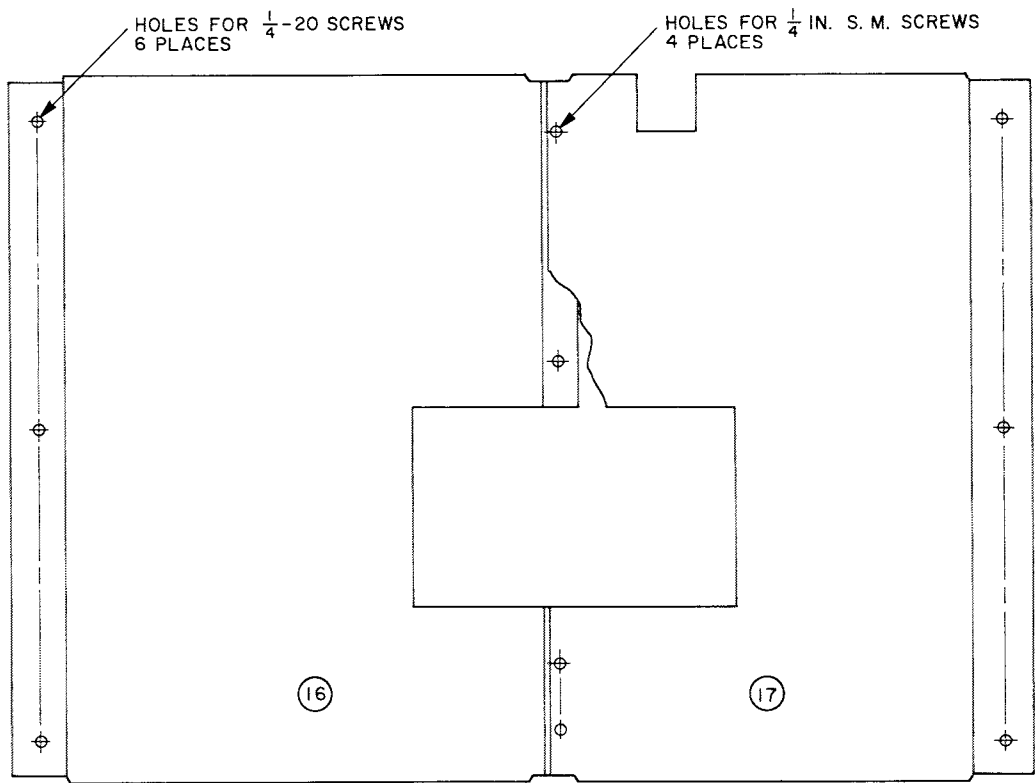
30HR160

Fig. 8 — End Panel Covers, Condenser Section



(Not for 30HR140,160 RIGHT END)

Fig. 9 — End Panel, Compressor Section



○ ITEM NO. (PACKAGE CONTENTS)

COMPRESSOR SECTION, RIGHT END

Fig. 10 — End Panel Assembly; 30HR140,160 Only

Manufacturer reserves the right to discontinue, or change at any time, specifications or designs without notice and without incurring obligations.