



50FJX,FJY,FKX,FKY,FPX,FPY034-074 50JJX,JJY,JKX,JKY,JPX,JPY034-064 Single Package Electric Cooling Units with Extended Plenum

Installation Instructions Supplement

This book is a supplement to the 50FJ,FK,FP,JJ,JK,JP Installation, Start-Up and Service Instructions and is to be used with units with optional extended plenum. The following units are covered in this supplement: 50FJX,FJY,FKX,FKY,FPX,FPY034-074 and 50JJX, JJY, JKX, JKY, JPX, JPY034-064 units. Units with an X in the fifth position are extended plenum units. Units with a Y in the fifth position are extended plenum units with the unit disconnect option.

GENERAL

Units with the extended plenum option are a bottom supply, air arrangement design, intended for mounting on a roof curb. The unit supply fan is arranged to discharge horizontally into an outlet plenum. The supply air then exits the plenum through the basepan opening into the supply duct.

The extended plenum option is available on standard length chassis units (units with a F in the third position) and extended length chassis units (units with a J in the third position).

The following information is included in this supplement and should be used for all extended plenum units:

- physical data tables (Table A)
- base unit dimensional drawings (Fig. A-F)
- roof curb dimensional drawings (Fig. G-N)
- rigging data (Fig. O)
- center of gravity and corner weights (Fig P)
- fan drive data (Table B)

Installation of these units follows all procedures described in the base unit installation instructions for curb-mounted units.

Table A — Physical Data — Extended Plenum Units

BASE UNIT	50FJ,FK,FP 034	50JJ,JK,JP 034	50FJ,FK,FP 038	50JJ,JK,JP 038
NOMINAL CAPACITY (tons)	30		35	
OPERATING WEIGHT (lb)				
Base Unit	5970	6470	6150	6650
With Economizer	6270	6770	6450	6950
COMPRESSORS	Semi-Hermetic			
Quantity...Type	2...06D		1...06D, 1...06E	
Capacity Steps (%)				
CV Units	50, 100		43,100	
VAV Units	17, 33, 50, 66, 83, 100		14, 28, 43, 71, 86, 100	
Number of Refrigerant Circuits	2		2	
REFRIGERANT				
Operating Charge (lb), Sys 1/Sys 2				
Without Hot Gas Bypass	29.0/29.0		31.0/30.5	
With Hot Gas Bypass	31.0/29.0		29.0/30.5	
CONDENSER COILS	¾-in. Tube Diameter			
Quantity	2		2	
Rows...Fins/in.				
Aluminum	3...15.0		3...15.0	
Copper (Optional)	3...13.7		3...13.7	
Total Face Area (sq ft)	37.5		37.5	
EVAPORATOR COILS	½-in. Tube Diameter			
Quantity	1		1	
Rows...Fins/in.	3...15.0		4...15.0	
Total Face Area (sq ft)	32.1		32.1	
Refrigerant Feed Device...No. per Circuit	TXV...1		TXV...1	
CONDENSER FANS	Propeller Type			
Quantity...Diameter (in.)	2...30		2...30	
Nominal Cfm	18,600		18,600	
Motor Hp...Rpm	1.0...1140		1.0...1140	
EVAPORATOR FAN	Centrifugal 25 x 25 in.			
Nominal Cfm	10,500		12,250	
Maximum Allowable Cfm	15,000		15,000	
Maximum Allowable Rpm	900		900	
Shaft Diameter at Pulley (in.)	1 11/16		1 11/16	
EVAPORATOR-FAN MOTOR AND DRIVE	(Any motor available on any unit)			
Motor Hp	7.5	10.0	15.0	20.0
Motor Frame Size	213T	215T	254T	256T
Efficiency at Full Load (%)				
High Efficiency	88.5	89.5	91.0	91.0
Premium Efficiency*	91.7	91.7	93.0	93.6
Fan Pulley Pitch Diameter (in.)	13.6	13.7	13.7	13.7
Motor Pulley Pitch Diameter (in.)	3.4	4.3	4.9	5.5
Resulting Fan Rpm	438	549	626	703
Maximum Allowable Rpm	900	900	900	900
Belts Quantity...Model No.	2...BX60	2...5VX630	2...5VX630	2...5VX630
Center Distance Range (in.)	17.74...14.30	17.74...14.30	17.63...14.01	17.63...14.01
OPTIONAL POWER EXHAUST	Centrifugal, 15 x 15 in. (Any motor available on any unit)			
Quantity...Motor Hp	2...3.0	2...5.0	2...5.0	2...7.5
Motor Frame Size	56HZ	184T	184T	213T
Efficiency at Full Load (%) High/Premium*	81.0/88.5	87.5/89.5	87.5/89.5	88.5/91.7
Fan Pulley Pitch Diameter (in.)	6.9	6.9	6.9	6.9
Motor Pulley Pitch Diameter (in.)	3.35	4.12	4.12	5.0
Shaft Diameter at Pulley (in.)	1 3/16	1 3/16	1 3/16	1 3/16
Resulting Fan Rpm	843	1040	1040	1264
Maximum Allowable Rpm	1300	1300	1300	1300
Belts Quantity...No.	2...3VX670	2...3VX670	2...3VX670	2...3VX710
FILTERS				
Standard Efficiency Throwaway (Standard)	12...20 x 25 x 2		12...20 x 25 x 2	
Quantity...Size (in.)	4...16 x 20 x 2		4...16 x 20 x 2	
Medium Efficiency (30%) Pleated (Optional)	12...20 x 25 x 2		12...20 x 25 x 2	
Quantity...Size (in.)	4...16 x 20 x 2		4...16 x 20 x 2	
High Efficiency (90%) Bag Filters with Prefilters (Optional)	6...20 x 24 x 22		6...20 x 24 x 22	
Quantity...Size (in.)	6...20 x 20 x 22		6...20 x 20 x 22	

LEGEND

- CV** — Constant Volume
- TXV** — Thermostatic Expansion Valve
- VAV** — Variable Air Volume

*Premium efficiency motors are not available on 380-v and 575-v units.

Table A — Physical Data — Extended Plenum Units (cont)

BASE UNIT	50FJ,FK,FP 044	50JJ,JK,JP 044	50FJ,FK,FP 048	50JJ,JK,JP 048
NOMINAL CAPACITY (tons)	40		45	
OPERATING WEIGHT (lb)				
Base Unit	6620	7120	6740	7240
With Economizer	6920	7420	7040	7540
COMPRESSORS	Semi-Hermetic			
Quantity...Type	2...06E		2...06E	
Capacity Steps (%)				
CV Units	50, 100		56, 100	
VAV Units	25, 50, 75, 100		18, 37, 56, 63, 81, 100	
Number of Refrigerant Circuits	2		2	
REFRIGERANT				
Operating Charge (lb), Sys 1/Sys 2	40.0/40.0		43.5/39.0	
Without Hot Gas Bypass				
With Hot Gas Bypass	42.0/40.0		41.5/39.0	
CONDENSER COILS	¾-in. Tube Diameter			
Quantity	2		2	
Rows...Fins/in.				
Aluminum	3...15.0		3...15.0	
Copper (Optional)	3...13.7		3...13.7	
Total Face Area (sq ft)	50.0		50.0	
EVAPORATOR COILS	½-in. Tube Diameter			
Quantity	2		2	
Rows...Fins/in.	3...15.0		4...15.0	
Total Face Area (sq ft)	45.5		45.5	
Refrigerant Feed Device...No. per Circuit	TXV...2		TXV...2	
CONDENSER FANS	Propeller Type			
Quantity...Diameter (in.)	3...30		3...30	
Nominal Cfm	26,000		26,000	
Motor Hp...Rpm	1.0...1140		1.0...1140	
EVAPORATOR FAN	Centrifugal 25 x 25 in.			
Nominal Cfm	14,000		15,750	
Maximum Allowable Cfm	20,000		20,000	
Maximum Allowable Rpm	900		900	
Shaft Diameter at Pulley (in.)	1 ¹ / ₁₆		1 ¹ / ₁₆	
EVAPORATOR-FAN MOTOR AND DRIVE	(Any motor available on any unit)			
Motor Hp	7.5	10.0	15.0	20.0
Motor Frame Size	213T	215T	254T	256T
Efficiency at Full Load (%)				
High Efficiency	88.5	89.5	91.0	91.0
Premium Efficiency*	91.7	91.7	93.0	93.6
Fan Pulley Pitch Diameter (in.)	13.6	13.7	13.7	13.7
Motor Pulley Pitch Diameter (in.)	3.4	4.3	4.9	5.5
Resulting Fan Rpm	438	549	626	703
Maximum Allowable Rpm	900	900	900	900
Belts Quantity...Model No.	2...BX60	2...5VX630	2...5VX630	2...5VX630
Center Distance Range (in.)	17.74...14.30	17.74...14.30	17.63...14.01	17.63...14.01
OPTIONAL POWER EXHAUST	Centrifugal, 15 x 15 in. (Any motor available on any unit)			
Quantity...Motor Hp	2...3.0	2...5.0	2...5.0	2...7.5
Motor Frame Size	56HZ	184T	184T	213T
Efficiency at Full Load (%) High/Premium*	81.0/88.5	87.5/89.5	87.5/89.5	88.5/91.7
Fan Pulley Pitch Diameter (in.)	6.9	6.9	6.9	6.9
Motor Pulley Pitch Diameter (in.)	3.35	4.12	4.12	5.0
Shaft Diameter at Pulley (in.)	1 ³ / ₁₆	1 ³ / ₁₆	1 ³ / ₁₆	1 ³ / ₁₆
Resulting Fan Rpm	843	1040	1040	1264
Maximum Allowable Rpm	1300	1300	1300	1300
Belts Quantity...No.	2...3VX670	2...3VX670	2...3VX670	2...3VX710
FILTERS				
Standard Efficiency Throwaway (Standard)	12...20 x 25 x 2		12...20 x 25 x 2	
Quantity...Size (in.)	4...16 x 20 x 2		4...16 x 20 x 2	
Medium Efficiency (30%) Pleated (Optional)	12...20 x 25 x 2		12...20 x 25 x 2	
Quantity...Size (in.)	4...16 x 20 x 2		4...16 x 20 x 2	
High Efficiency (90%) Bag Filters with Prefilters (Optional)	6...20 x 24 x 22		6...20 x 24 x 22	
Quantity...Size (in.)	6...20 x 20 x 22		6...20 x 20 x 22	

LEGEND

- CV — Constant Volume
- TXV — Thermostatic Expansion Valve
- VAV — Variable Air Volume

*Premium efficiency motors are not available on 380-v and 575-v units.

Table A — Physical Data — Extended Plenum Units (cont)


BASE UNIT	50FJ,FK,FP 054	50JJ,JK,JP 054	50FJ,FK,FP 064	50JJ,JK,JP 064	50FJ,FK,FP 074
NOMINAL CAPACITY (tons)	50		60		75
OPERATING WEIGHT (lb)					
Base Unit	8250	8800	8550	9100	8970
With Economizer	8780	9330	9080	9630	9500
COMPRESSORS			Semi-Hermetic		
Quantity...Type	2...06E		2...06E		2...06E
Capacity Steps (%)					
CV Units	60, 100		50, 100		43, 100
VAV Units	20, 40, 60, 80, 100		17, 33, 50, 66, 83, 100		14, 28, 43, 71, 85, 100
Number of Refrigerant Circuits	2		2		2
REFRIGERANT					
Operating Charge (lb), Sys 1/Sys 2					
Without Hot Gas Bypass	59.0/44.5		61.0/61.0		70.5/64.5
With Hot Gas Bypass	62.0/44.5		64.0/61.0		73.5/64.5
CONDENSER COILS			¾-in. Tube Diameter		
Quantity	4		4		4
Rows...Fins/in.					
Aluminum	2...17.0, 3...17.0		3...17.0		3...17.0
Copper (Optional)	2...15.7, 3...15.7		3...15.7		3...15.7
Total Face Area (sq ft)	72.4		72.4		108.4
EVAPORATOR COILS			½-in. Tube Diameter		
Quantity	2		2		2
Rows...Fins/in.	3...17.0		4...17.0		4...17.0
Total Face Area (sq ft)	61.5		61.5		61.5
Refrigerant Feed Device... No. per Circuit	TXV...2		TXV...2		TXV...2
CONDENSER FANS			Propeller Type		
Quantity...Diameter (in.)	4...30		4...30		5...30
Nominal Cfm	40,000		40,000		50,000
Motor Hp...Rpm	1.0...1140		1.0...1140		1.0...1140
EVAPORATOR FAN			Centrifugal 30 x 27 in.		
Nominal Cfm	17,500		21,000		24,500
Maximum Allowable Cfm	25,000		30,000		30,000
Maximum Allowable Rpm	750		750		750
Shaft Diameter at Pulley (in.)	1 11/16		1 11/16		1 11/16
EVAPORATOR-FAN MOTOR AND DRIVE			(Any motor available on any unit)		
Motor Hp	15.0	20.0	25.0	30.0	
Motor Frame Size	254T	256T	284T	286T	
Efficiency at Full Load (%)					
High Efficiency	91.0	91.0	91.7	92.4	
Premium Efficiency*	93.0	93.6	93.6	93.6	
Fan Pulley Pitch Diameter (in.)	13.7	13.7	13.7	15.5	
Motor Pulley Pitch Diameter (in.)	4.5	5.1	5.5	5.9	
Resulting Fan Rpm	575	651	703	711	
Maximum Allowable Rpm	750	750	750	750	
Belts Quantity...Model No.	2...5VX1230	2...5VX1230	2...5VX1230	2...5VX1250	
Center Distance Range (in.)	48.25...44.00	48.25...44.00	48.50...44.25	48.50...44.25	
OPTIONAL POWER EXHAUST			Centrifugal, 18 x 15 in. (Any motor available on any unit)		
Quantity...Motor Hp	2...5.0		2...7.5		2...10.0
Motor Frame Size	184T		213T		215T
Efficiency at Full Load (%) High/Premium*	87.5/89.5		88.5/91.7		89.5/91.7
Fan Pulley Pitch Diameter (in.)	10.6		10.6		10.6
Motor Pulley Pitch Diameter (in.)	4.5		5.0		5.6
Shaft Diameter at Pulley (in.)	1 7/16		1 7/16		1 7/16
Resulting Fan Rpm	740		820		920
Maximum Allowable Rpm	925		925		925
FILTERS					
Standard Efficiency					
Throwaway (Standard)	15...20 x 25 x 2		15...20 x 25 x 2		15...20 x 25 x 2
Quantity...Size (in.)	5...16 x 20 x 2		5...16 x 20 x 2		5...16 x 20 x 2
Medium Efficiency (30%) Pleated (Optional)	15...20 x 25 x 2		15...20 x 25 x 2		15...20 x 25 x 2
Quantity...Size (in.)	5...16 x 20 x 2		5...16 x 20 x 2		5...16 x 20 x 2
High Efficiency (90%) Bag Filters with Prefilters (Optional)	6...20 x 24 x 22		6...20 x 24 x 22		6...20 x 24 x 22
Quantity...Size (in.)	6...24 x 24 x 22		6...24 x 24 x 22		6...24 x 24 x 22

LEGEND

- CV** — Constant Volume
- TXV** — Thermostatic Expansion Valve
- VAV** — Variable Air Volume

*Premium efficiency motors are not available on 380-v and 575-v units.

NOTES:

- Dimensions in [] are in millimeters.
-  Center of Gravity includes economizer. Unit weight does not include economizer.
- Unit clearances:
 Top — Do not restrict condenser fans
 Control Box End — 6'-0" [1829]
 Sides — 6'-0" [1829]
 Economizer End — 6'-0" [1829] (except power exhaust units 10'-0") [3048]
 For smaller service and operating clearances, contact Carrier Application Engineering Department.
- Downshot ducts designed to be attached to accessory roof curb. If unit is mounted on dunnage, it is recommended the ducts be supported by cross braces as done on the accessory roof curb.
- When the unit is slab mounted, plug the factory drilled auxiliary condensate drain holes.
- Economizer side hoods are folded inside unit for shipping.

UNIT SIZE	WEIGHT		A	
	lb	kg	mm	ft-in.
50FJX,FKX,FPX,FJY,FKY,FPY034	5970	2714	4044	13-3 1/4
50FJX,FKX,FPX,FJY,FKY,FPY038	6150	2770	4090	13-5

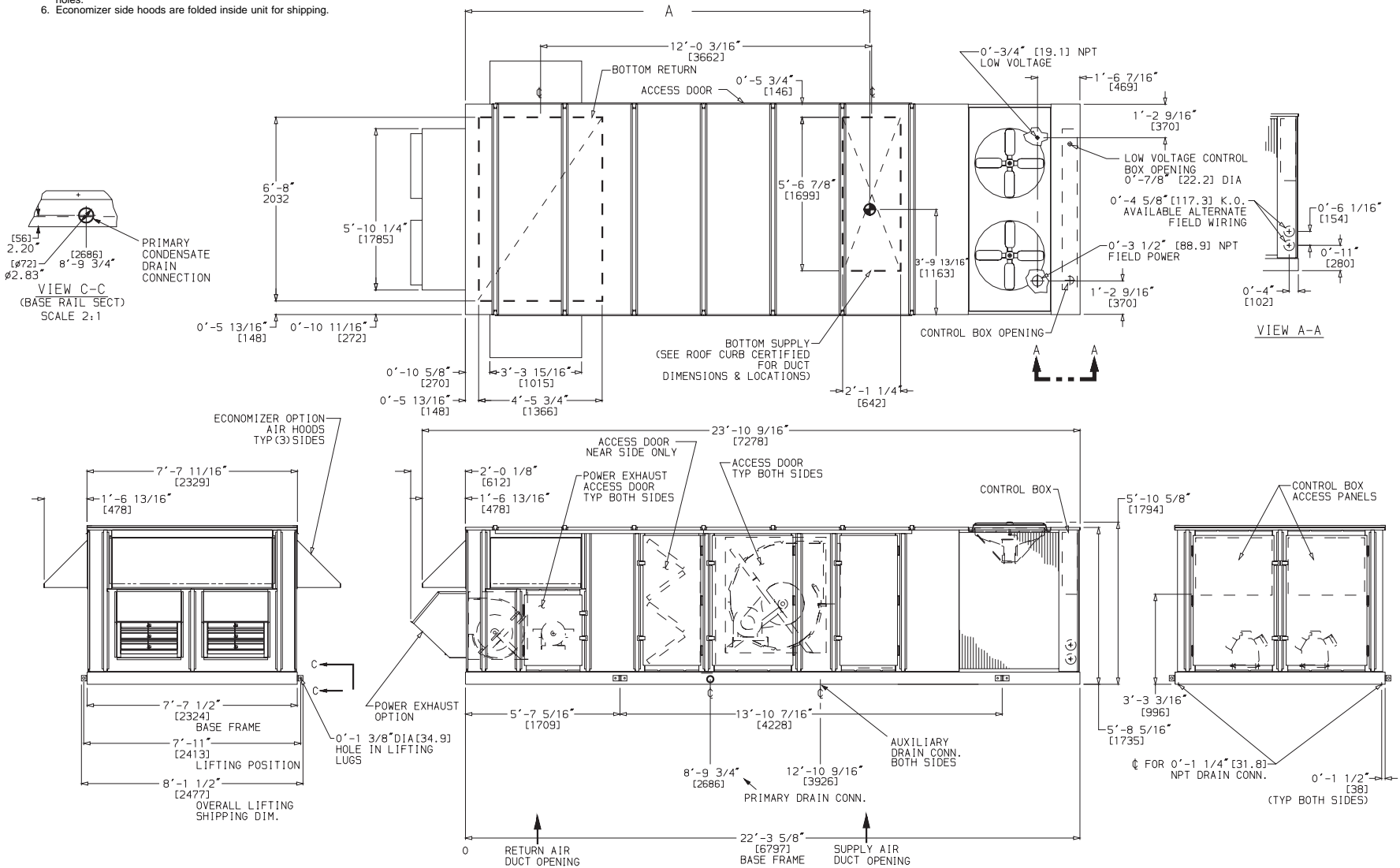



Fig. A — Base Unit Dimensions — 50FJX,FJY,FKX,FKY,FPX,FPY034,038 Units

NOTES:

- Dimensions in [] are in millimeters.
-  Center of Gravity includes economizer. Unit weight does not include economizer.
- Unit clearances:
 Top — Do not restrict condenser fans
 Control Box End — 6'-0" [1829]
 Sides — 6'-0" [1829]
 Economizer End — 6'-0" [1829] (except power exhaust units 10'-0" [3048])
 For smaller service and operating clearances, contact Carrier Application Engineering Department.
- Downshot ducts designed to be attached to accessory roof curb. If unit is mounted on dunnage, it is recommended the ducts be supported by cross braces as done on the accessory roof curb.
- When the unit is slab mounted, plug the factory drilled auxiliary condensate drain holes.
- Economizer side hoods are folded inside unit for shipping.

UNIT SIZE	WEIGHT		A	
	lb	kg	mm	ft.in.
50FJX,FKX,FPX,FJY,FKY,FPY044	6620	3009	4823	15- 9/8
50FJX,FKX,FPX,FJY,FKY,FPY048	6740	3027	4851	15-11

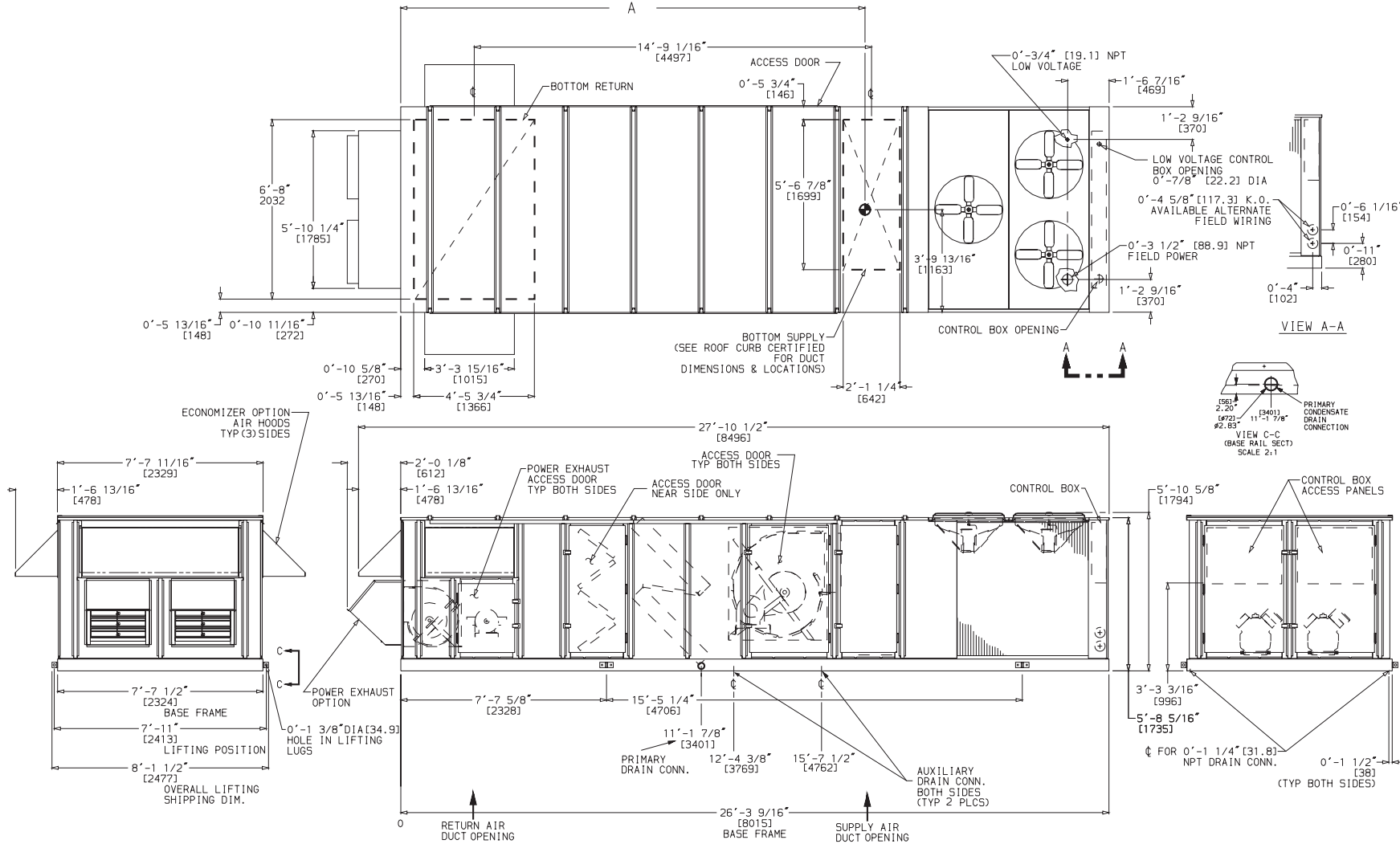



Fig. B — Base Unit Dimensions — 50FJX,FJY,FKX,FKY,FPX,FPY044,048 Units

UNIT SIZE	WEIGHT		A		B		C		D		E		F	
	lb	kg	mm	ft-in.	mm	ft-in.	mm	ft-in.	mm	ft-in.	mm	ft-in.	mm	ft-in.
50FJX,FJY,FKX,FKY,FPX,FPY054	8250	3750	2830	9-3 ³ / ₄	6427	21-1	6045	19-10	1163	3-9 ¹³ / ₁₆	11 140	36-6 ⁹ / ₁₆	11 524	37-9 ¹¹ / ₁₆
50FJX,FJY,FKX,FKY,FPX,FPY064	8550	3886	2830	9-3 ³ / ₄	6427	21-1	6045	19-10	1163	3-9 ¹³ / ₁₆	11 140	36-6 ⁹ / ₁₆	11 524	37-9 ¹¹ / ₁₆
50FJX,FJY,FKX,FKY,FPX,FPY074	8970	4077	3694	12-1 ³ / ₄	5563	18-3	6477	21- 3	1163	3-9 ¹³ / ₁₆	12 049	39-6 ³ / ₈	12 433	40-9 ¹ / ₂

NOTES:

- Dimensions in [] are in millimeters.
-  Center of Gravity includes economizer. Unit weight does not include economizer.
- Unit clearances:
 Top — Do not restrict condenser fans
 Control Box End — 6'-0" [1829]
 Sides — 6'-0" [1829]
 Economizer End — 6'-0" [1829] (except power exhaust units 10'-0" [3048])
 For smaller service and operating clearances, contact Carrier Application Engineering Department.
- Downshot ducts designed to be attached to accessory roof curb. If unit is mounted on dunnage, it is recommended the ducts be supported by cross braces as done on the accessory roof curb.
- When the unit is slab mounted, plug the factory drilled auxiliary condensate drain holes.
- Economizer side hoods are folded inside unit for shipping.

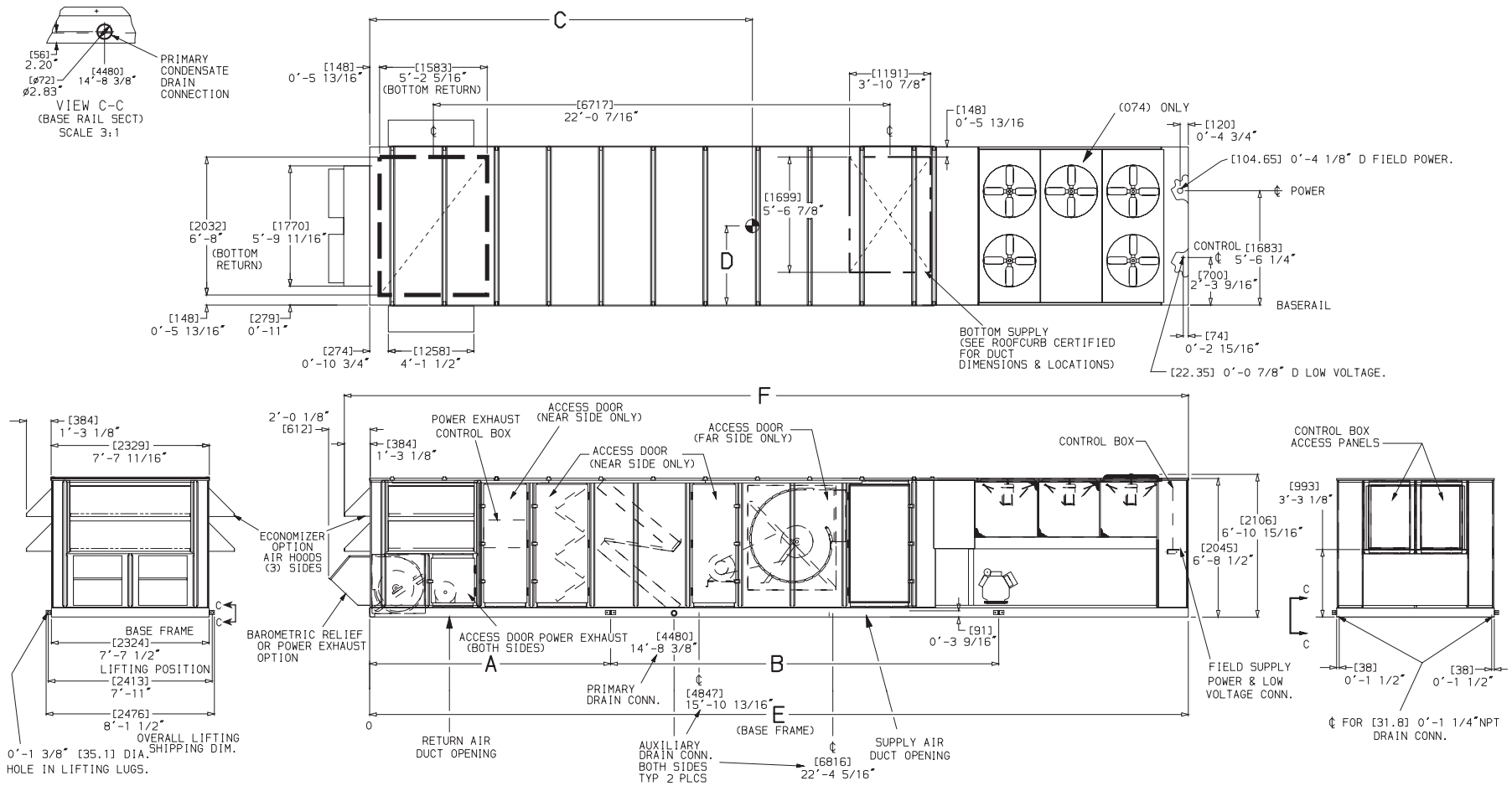


Fig. C — Base Unit Dimensions — 50FJX,FJY,FKX,FKY,FPX,FPY054-074 Units

NOTES:

1. Dimensions in [] are in millimeters.

2. Center of gravity includes economizer. Unit weight does not include economizer or heating coil.

3. Unit Clearances

Top — Do not restrict condenser fans
Control Box End — 6'-0" [1829]
Sides — 6'-0" [1829]
Economizer End — 6'-0" [1829] (except power exhaust units 10'-0" [3048])
For smaller service and operational clearances, contact Carrier Application Engineering Department.

4. Downshot ducts designed to be attached to accessory roof curb. If unit is mounted on downshot, it is recommended the ducts be supported by cross braces as done on the accessory roof curb.

5. When the unit is slab mounted, plug the factory drilled auxiliary condensate drain holes.

6. Auxiliary heating coil dimensions (maximum):

Length (header included), 7'-0 1/4" [2140]

Width, 0'-9 5/8" [244]

Height, 4'-5 9/16" [1370]

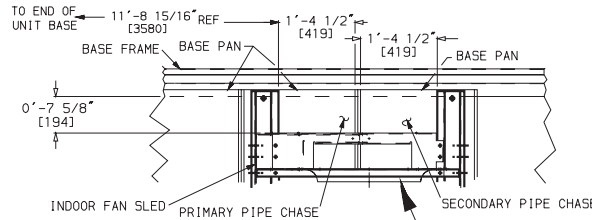
7. Auxiliary heating coil field supplied and installed.

8. Economizer side hoods are folded inside unit for shipping.

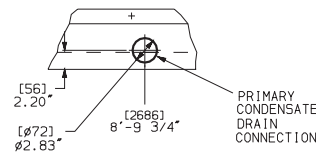
9. Pipe chases for auxiliary coil are not provided with unit. Chases must be field-cut.

UNIT SIZE	WEIGHT		A	
	lb	kg	mm	ft-in.
50JJX,JKX,JPX,JJY,JKY,JPY034	6470	2934	4618	14-5 1/16
50JJX,JKX,JPX,JPX,JKY,JPY038	6650	2991	4474	14-8 1/8

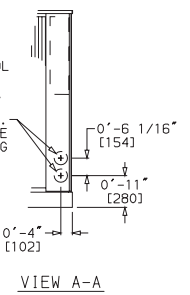
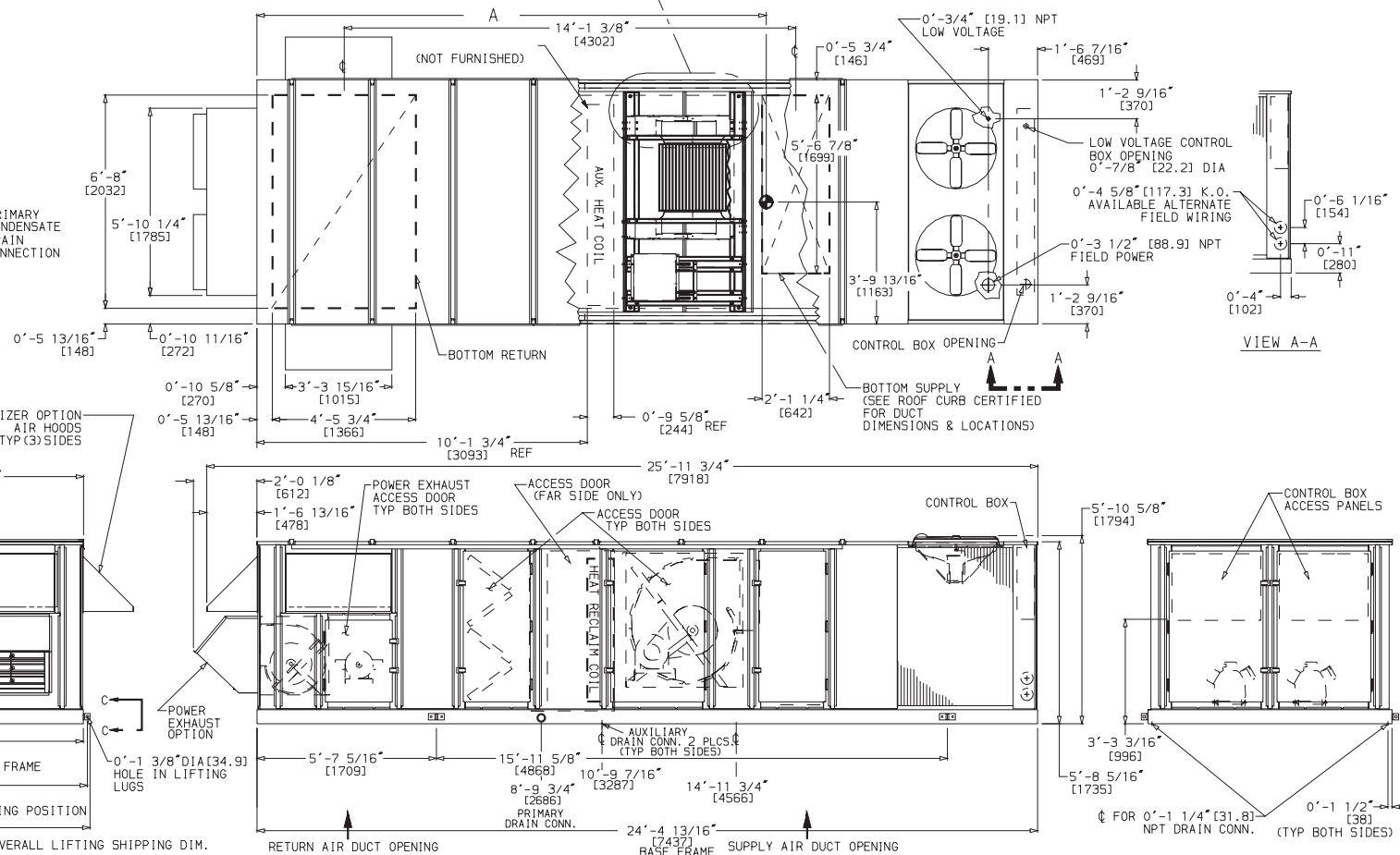
AUXILIARY COIL PIPE CHASES (See Note 9)



8




VIEW C-C
(BASE RAIL SECT)
SCALE 3:1



VIEW A-A

Fig. D — Base Unit Dimensions — 50JJX,JKY,JKX,JKY,JPX,JPY034,038 Units

NOTES:

- Dimensions in [] are in millimeters.
-  Center of gravity includes economizer. Unit weight does not include economizer or heating coil.
- Unit Clearances
 Top — Do not restrict condenser fans
 Control Box End — 6'-0" [1829]
 Sides — 6'-0" [1829]
 Economizer End — 6'-0" [1829] (except power exhaust units 10'-0" [3048])
 For smaller service and operational clearances, contact Carrier Application Engineering Department.
- Downshot ducts designed to be attached to accessory roof curb. If unit is mounted on downshot, it is recommended the ducts be supported by cross braces as done on the accessory roof curb.
- When the unit is slab mounted, plug the factory drilled auxiliary condensate drain holes.
- Auxiliary heating coil dimensions (maximum):
 Length — (header included), 7'-0 1/4" [2140]
 Width, 0'-9 5/8" [244]
 Height, 4'-7 1/2" [1410]
- Auxiliary heating coil field supplied and installed.
- Economizer side hoods are folded inside unit for shipping.
- Pipe chases for auxiliary coil are not provided with unit. Chases must be field-cut.

UNIT SIZE	WEIGHT		A	
	lb	kg	mm	ft-in.
50JXX,JKX,JPX,JJY,JKY,JPY044	7120	3229	5211	17-1 1/8"
50JJX,JKX,JPX,JJY,JKY,JPY048	7240	3247	5239	17-2 1/4"

AUXILIARY COIL PIPE CHASES (See Note 9)

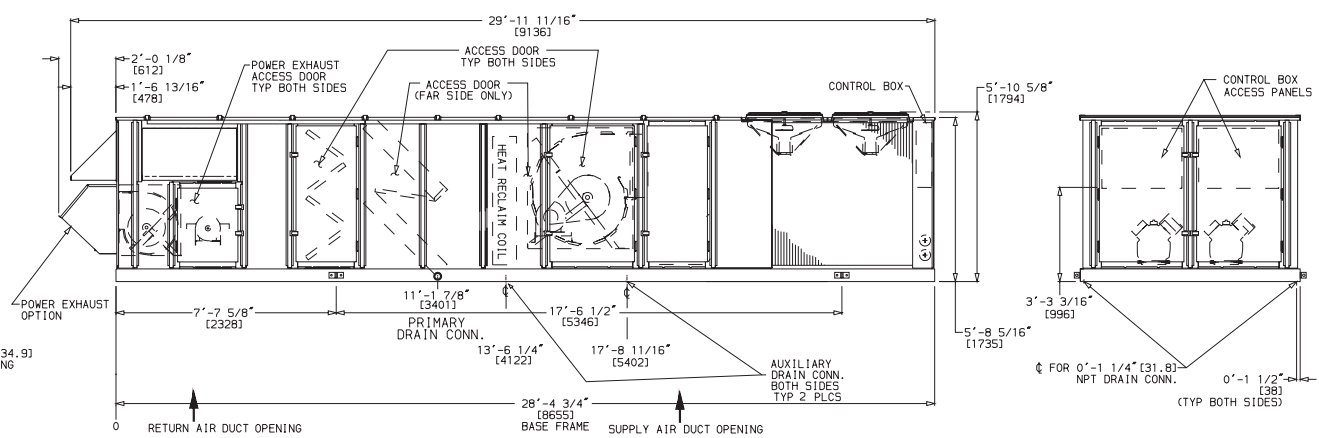
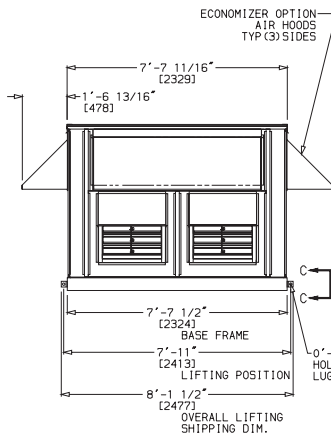
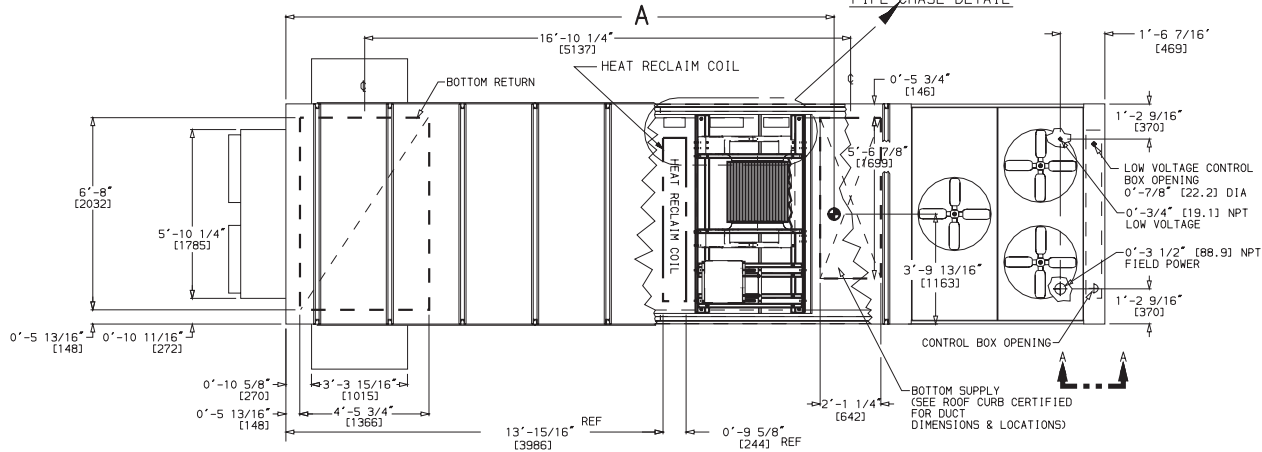
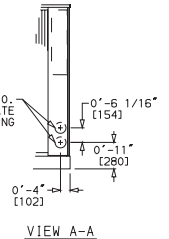
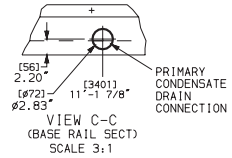
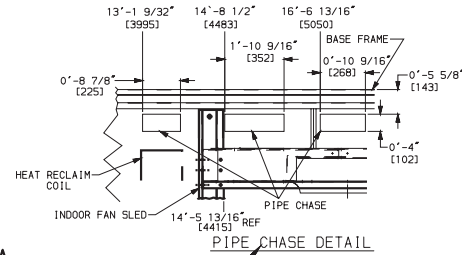



Fig. E — Base Unit Dimensions — 50JXX,JJY,JKX,JKY,JPX,JPY044,048 Units

UNIT SIZE	WEIGHT		A		B		C		D		E		F	
	lb	kg	mm	ft-in.	mm	ft-in.	mm	ft-in.	mm	ft-in.	mm	ft-in.	mm	ft-in.
50JJX,JKX,JPX,JJY,JKY,JPY054	8800	3990	2959	9-8½	6940	22-9¾	6393	20-11⅞	1163	3-9⅜	11 780	38-7⅜	12 164	39-10⅞
50JJX,JKX,JPX,JJY,JKY,JPY064	9100	4127	2959	9-8½	6940	22-9¾	6393	20-11⅞	1163	3-9⅜	11 780	38-7⅜	12 164	39-10⅞

NOTES:

- Dimensions in [] are in millimeters.
-  Center of gravity includes economizer. Does not include heating coil. Unit weight does not include economizer or heating coil.
- Unit Clearances
 - Top — Do not restrict condenser fans
 - Control box end — 6'-0" [1829]
 - Sides — 6'-0" [1829]
 - Economizer End — 6'-0" [1829] (except power exhaust units 10'-0" [3048])
 For smaller service and operational clearances, contact Carrier Application Engineering Department.
- Downshot ducts designed to be attached to accessory roof curb. If unit is mounted on downnage, it is recommended the ducts be supported by cross braces as done on the accessory roof curb.
- When the unit is slab mounted, plug the factory drilled auxiliary condensate drain holes.
- Auxiliary heating coil dimensions (maximum):
 - Length (header included), 7'-0¼" [2140]
 - Width, 0'-9⅞" [244]
 - Height, 5'-6" [1676]
- Auxiliary heating coil field supplied and installed.
- Economizer side hoods are folded inside unit for shipping.
- Pipe chases for auxiliary coil are not provided with unit. Chases must be field-cut.

AUXILIARY COIL PIPE CHASES (See Note 9)

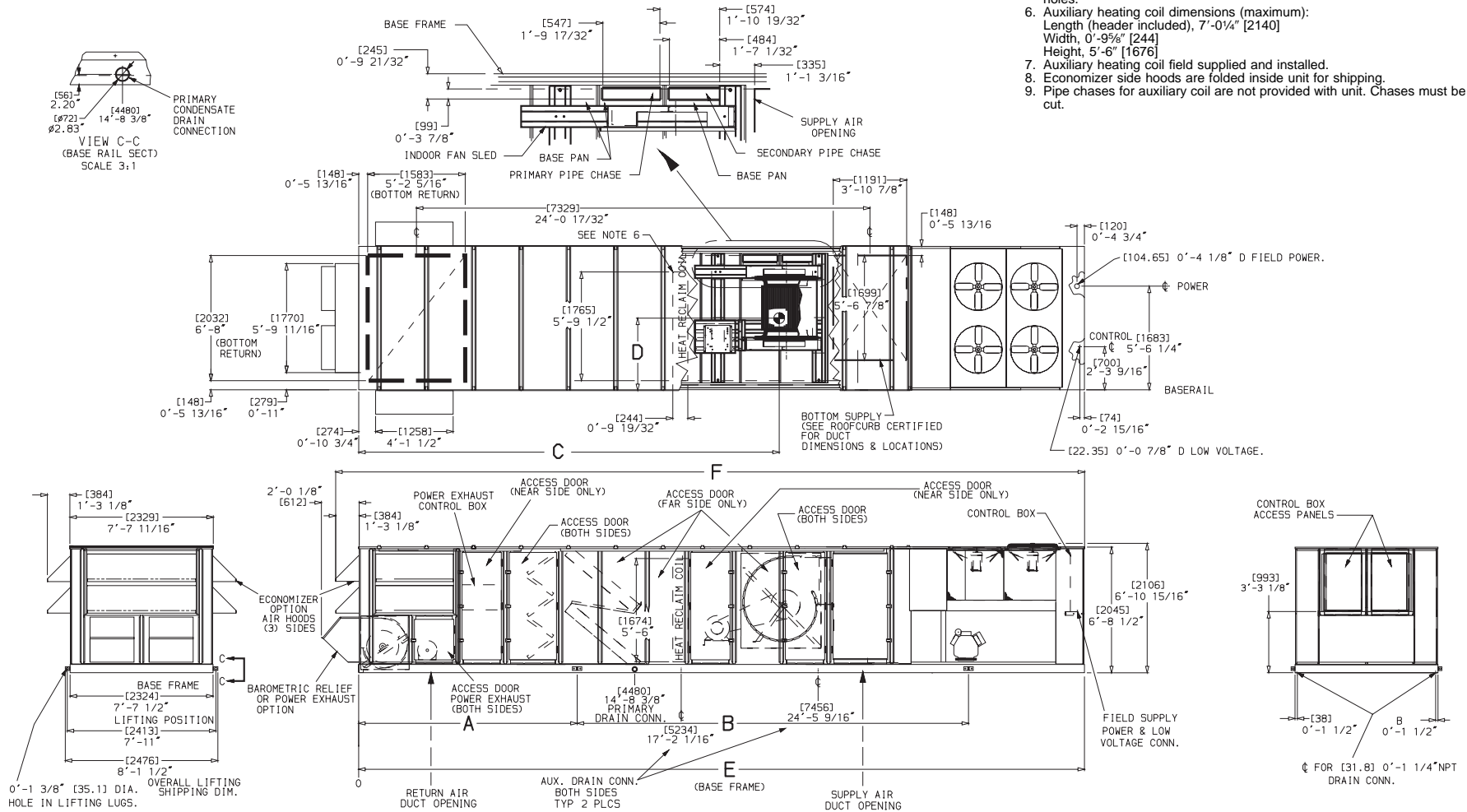
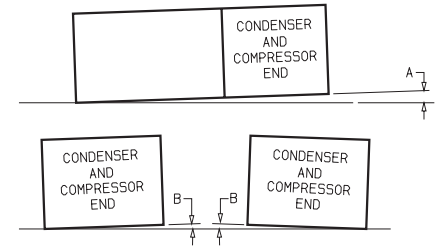
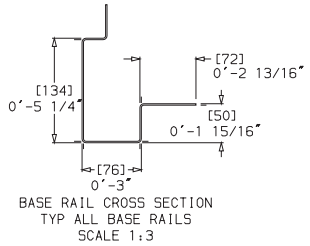
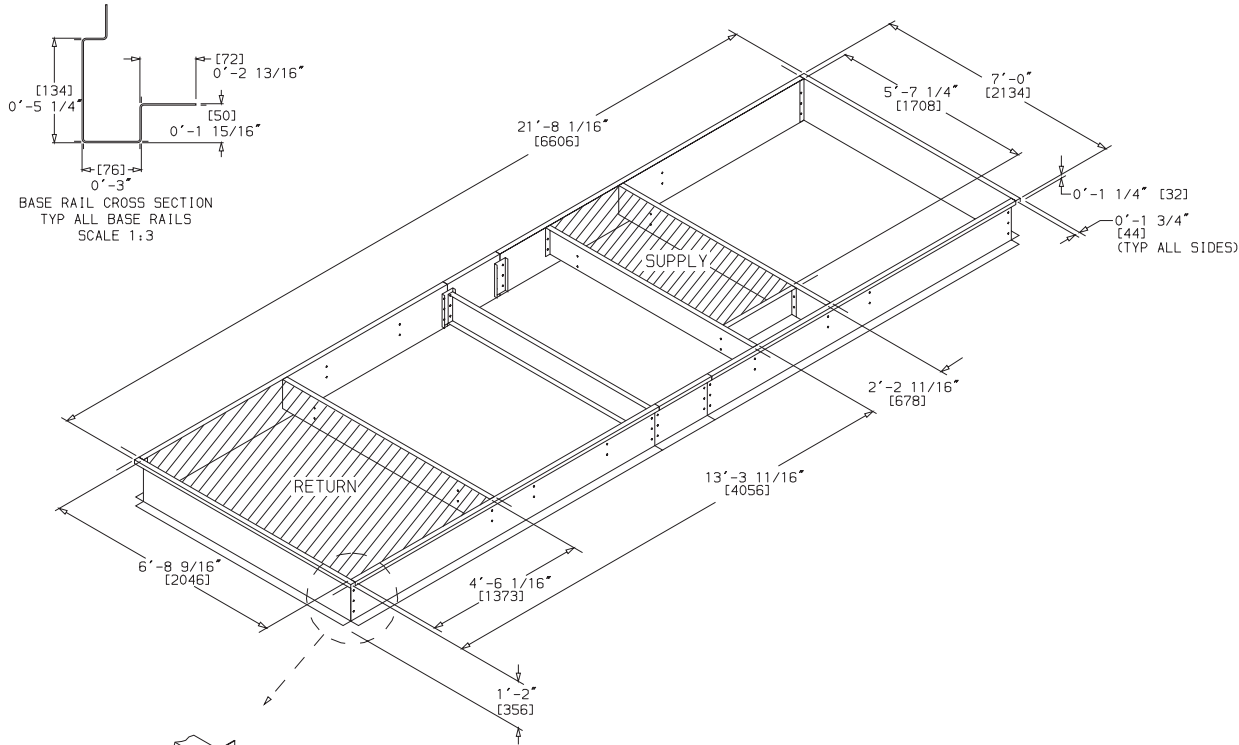


Fig. F — Base Unit Dimensions — 50JJX, JJY, JKX, JKY, JPX, JPY054, 064 Units

NOTES:

1. ROOF CURB IS SHIPPED DISASSEMBLED.
2. ROOF CURB: 14 GA. [VA03-56] STL.
3. DIMENSIONS IN [] ARE MILLIMETERS.



DIMENSIONS*
(degrees and inches)

Deg	A		B	
	in.	Deg	in.	Deg
1.0	2.0	.50	.75	

UNIT LEVELING TOLERANCES

*From edge of unit to horizontal.

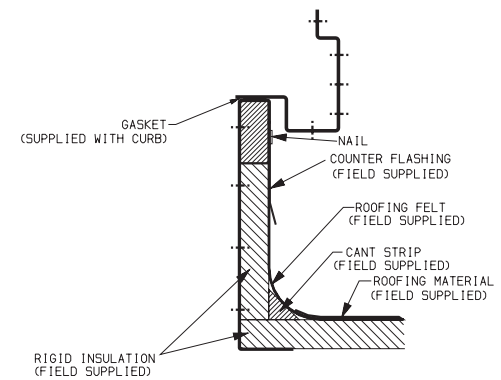
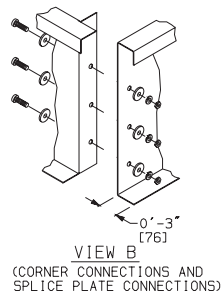
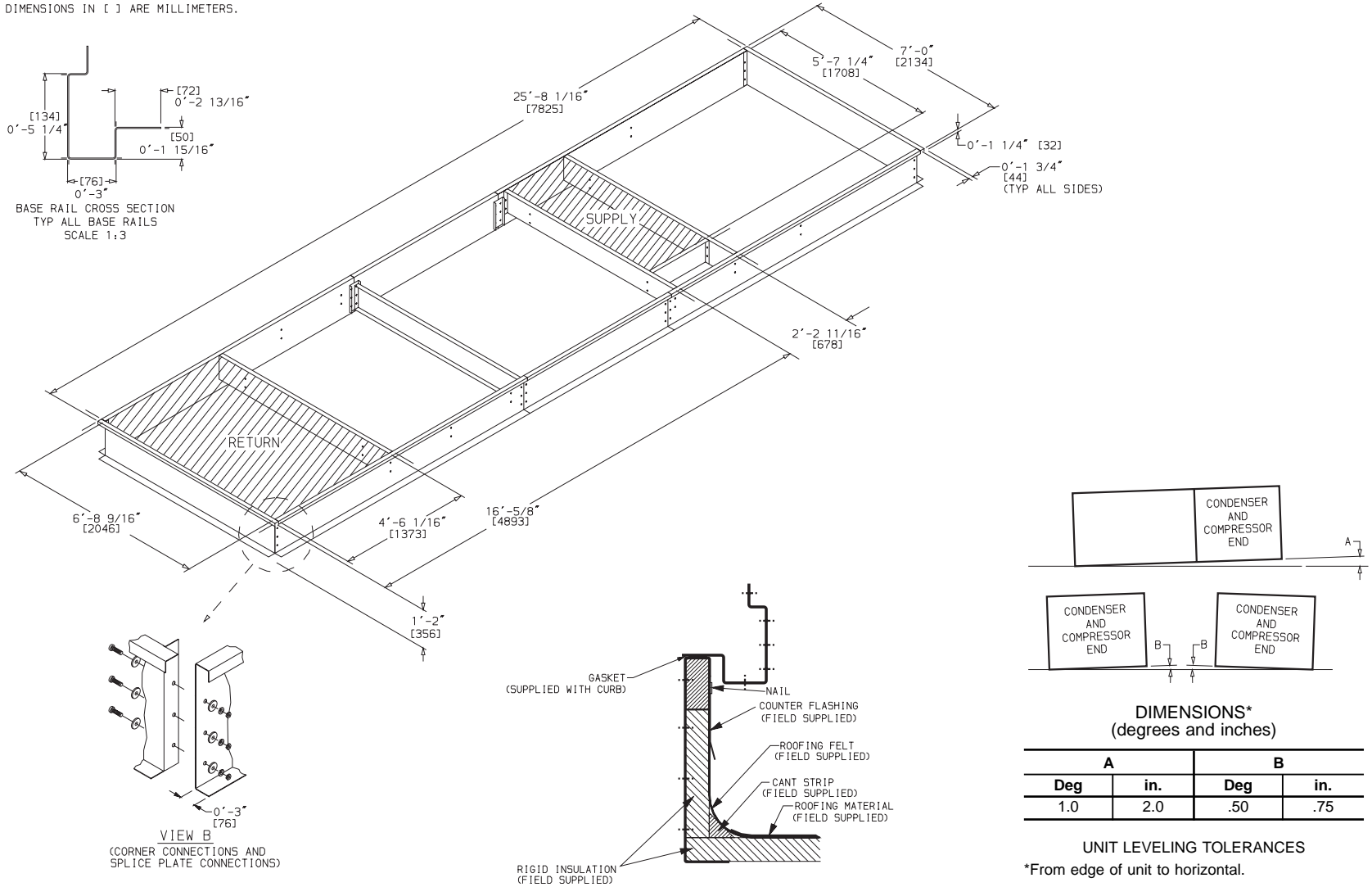


Fig. G — Roof Curb — 50FJX,FJY,FKX,FKY,FPX,FPY034,038

NOTES:

1. ROOF CURB IS SHIPPED DISASSEMBLED.
2. ROOF CURB: 14 GA. [VA03-56] STL.
3. DIMENSIONS IN [] ARE MILLIMETERS.



DIMENSIONS*
(degrees and inches)

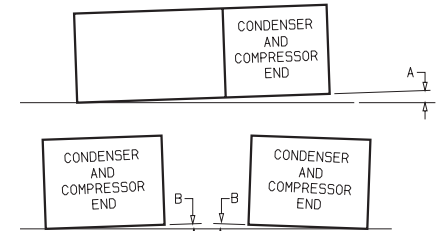
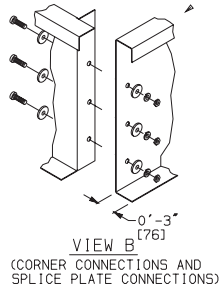
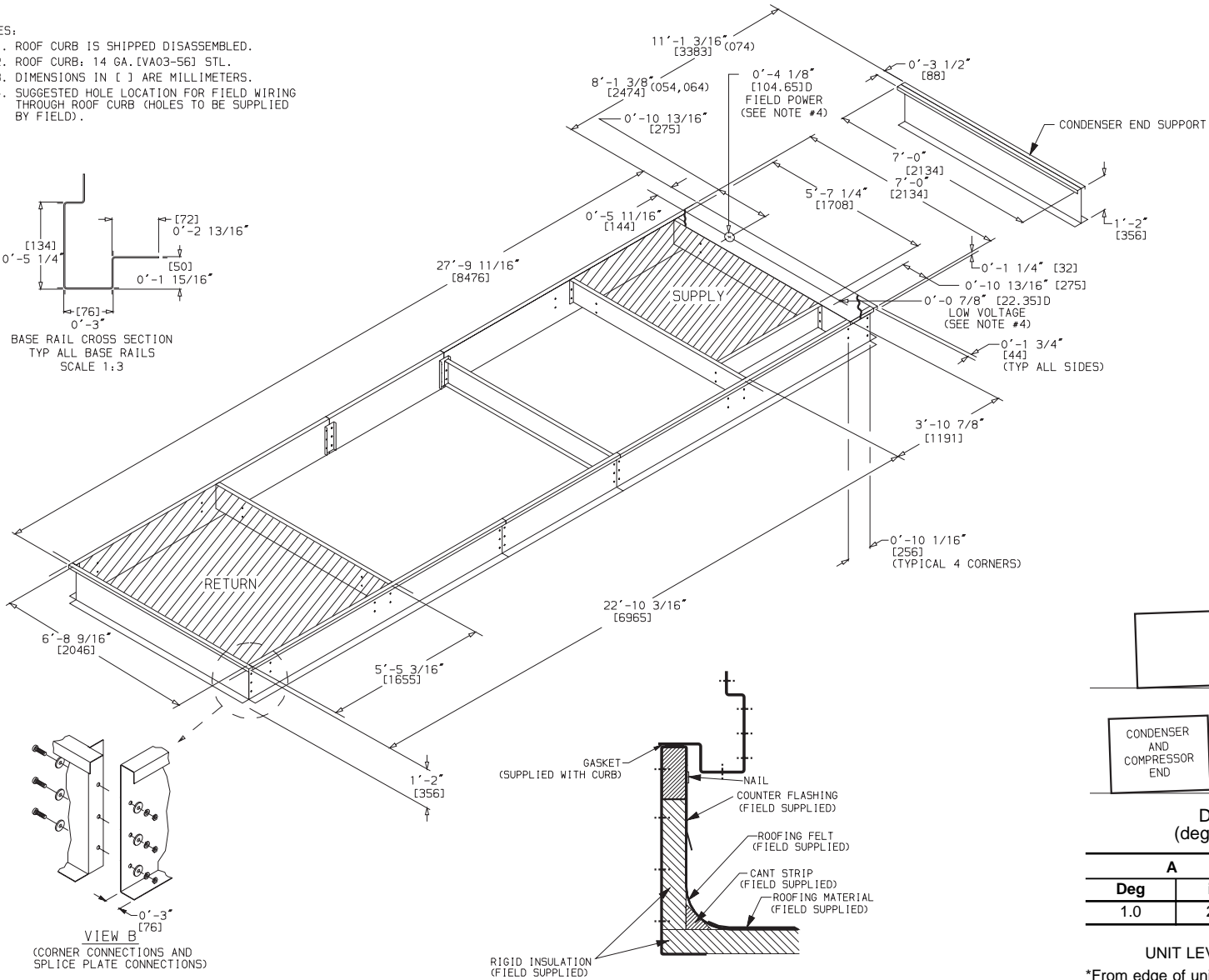
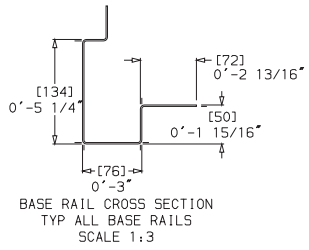
A		B	
Deg	in.	Deg	in.
1.0	2.0	.50	.75

UNIT LEVELING TOLERANCES
*From edge of unit to horizontal.

Fig. H — Roof Curb — 50FJX,FJY,FKX,FKY,FPX,FPY044,048

NOTES:

1. ROOF CURB IS SHIPPED DISASSEMBLED.
2. ROOF CURB: 14 GA. [VA03-56] STL.
3. DIMENSIONS IN [] ARE MILLIMETERS.
4. SUGGESTED HOLE LOCATION FOR FIELD WIRING THROUGH ROOF CURB (HOLES TO BE SUPPLIED BY FIELD).



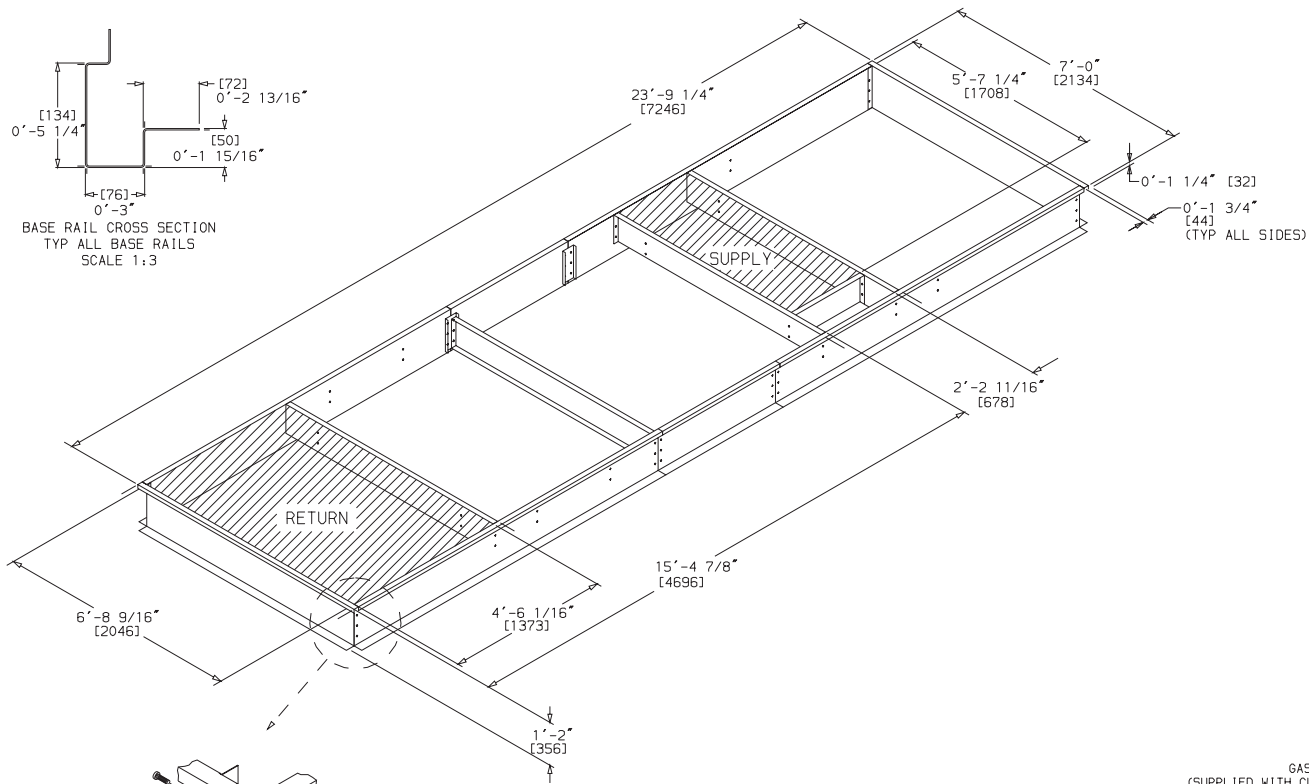
DIMENSIONS*
(degrees and inches)

A		B	
Deg	in.	Deg	in.
1.0	2.0	.50	.75

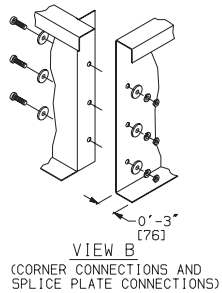
UNIT LEVELING TOLERANCES

*From edge of unit to horizontal.

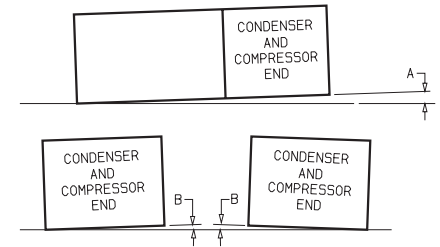
Fig. I — Roof Curb — 50FJX,FJY,FKX,FKY,FPX,FPY054-074



BASE RAIL CROSS SECTION
 TYP ALL BASE RAILS
 SCALE 1:3



- NOTES:
1. Roof curb is shipped disassembled.
 2. Roof curb: 14 gage (VA03-56) steel.
 3. Dimensions in [] are millimeters.
 4. Pipe chases for auxiliary coil are not provided with unit. Chases must be field-cut.



DIMENSIONS*
 (degrees and inches)

A		B	
Deg	in.	Deg	in.
1.0	2.0	.50	.75

UNIT LEVELING TOLERANCES

*From edge of unit to horizontal.

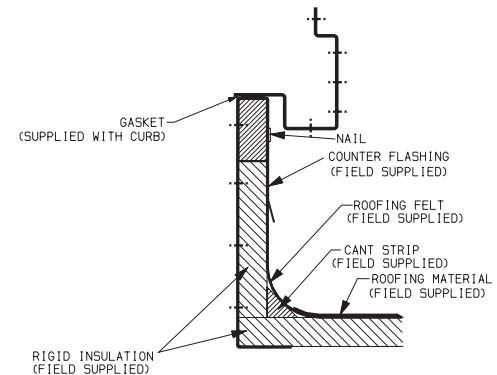
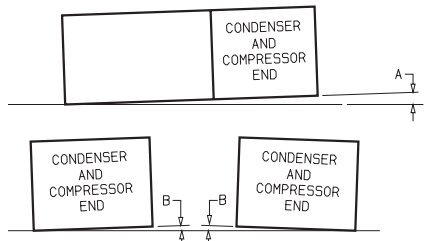
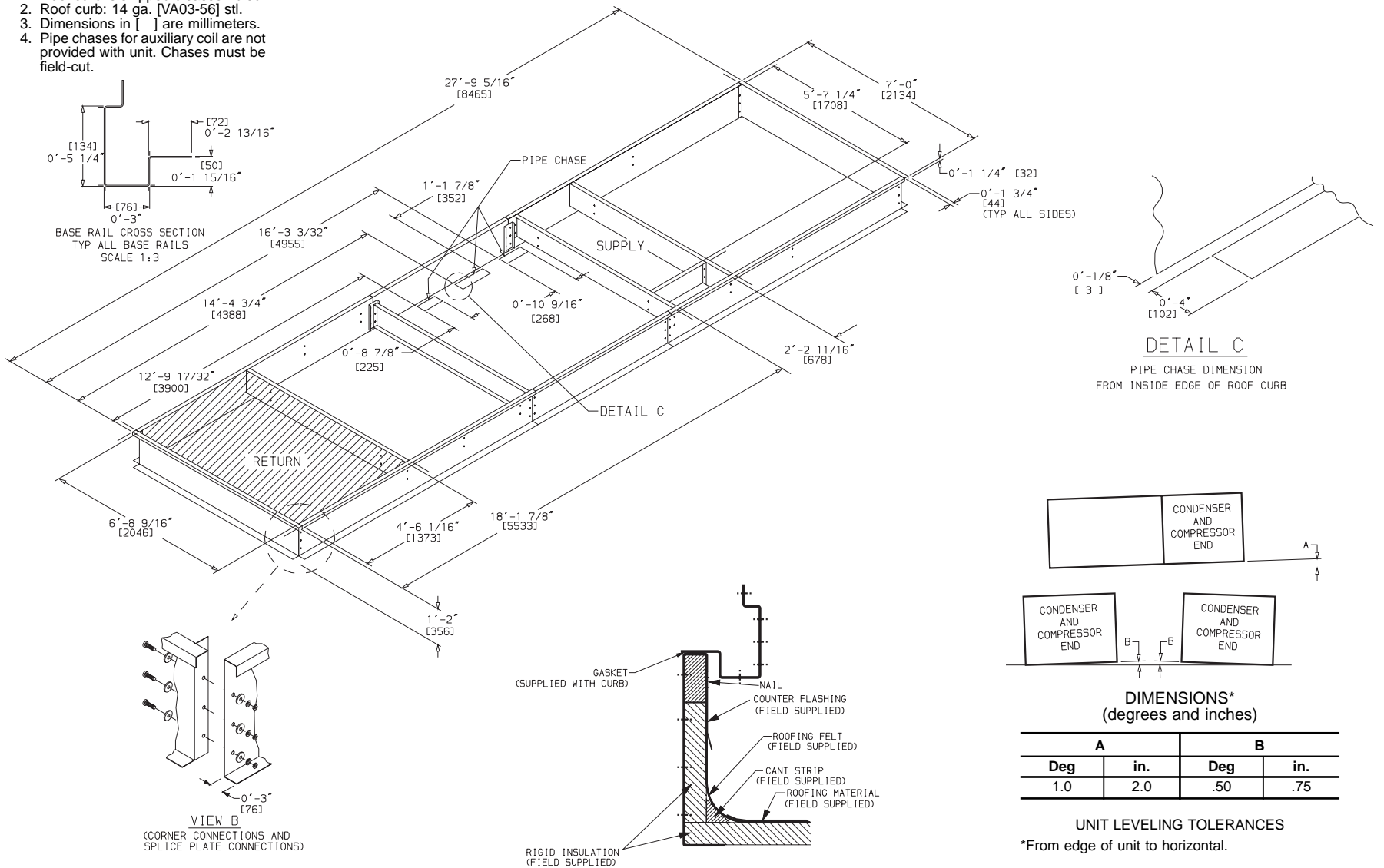


Fig. J — Roof Curb — 50JJX,JJY,JKX,JKY,JPX,JPY034,038

NOTES:

1. Roof curb is shipped disassembled.
2. Roof curb: 14 ga. [VA03-56] stl.
3. Dimensions in [] are millimeters.
4. Pipe chases for auxiliary coil are not provided with unit. Chases must be field-cut.



DIMENSIONS*
(degrees and inches)

A		B	
Deg	in.	Deg	in.
1.0	2.0	.50	.75

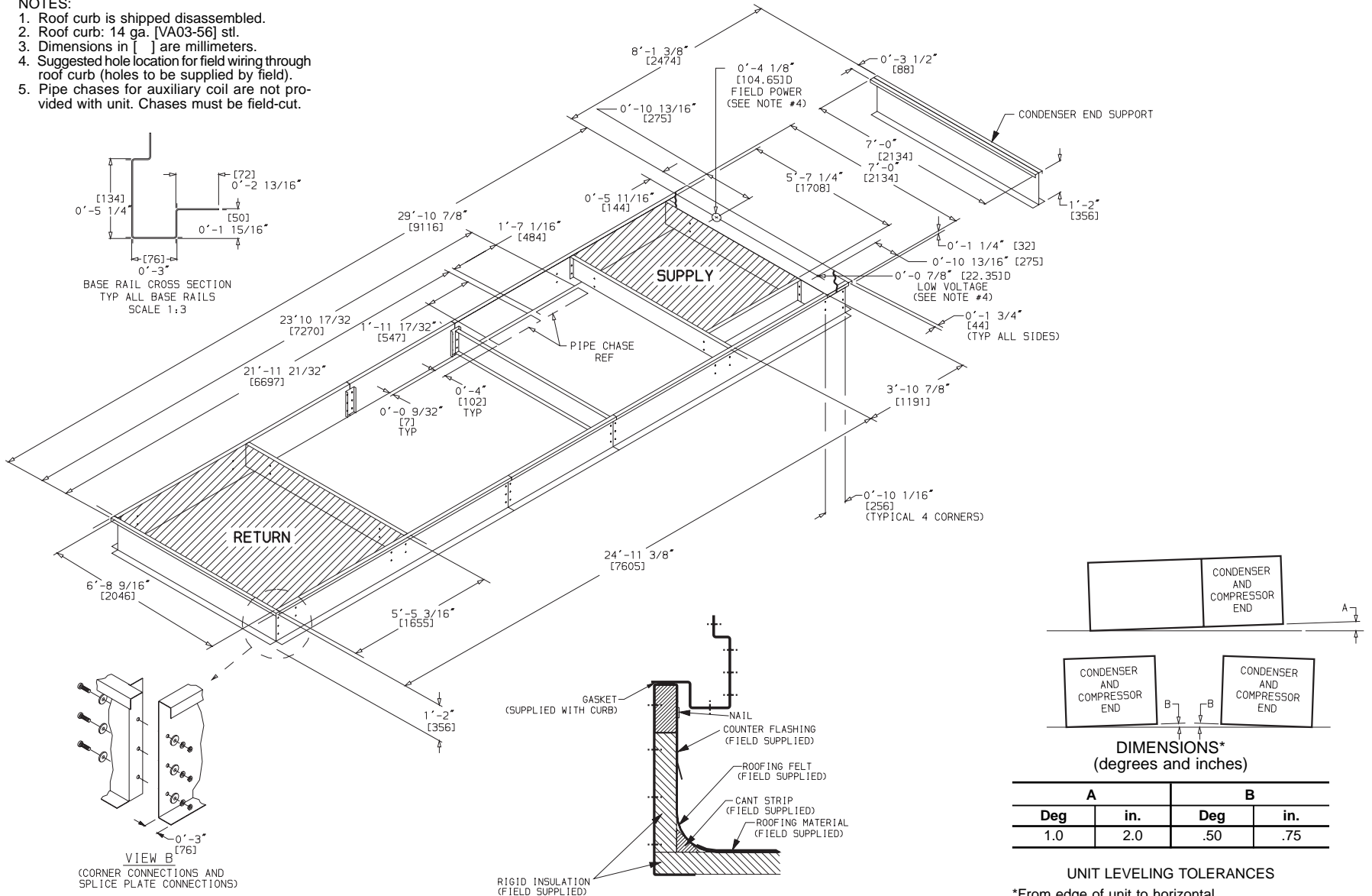
UNIT LEVELING TOLERANCES

*From edge of unit to horizontal.

Fig. K — Roof Curb — 50JJX,JJY,JKX,JKY,JPX,JPY044,048

NOTES:

1. Roof curb is shipped disassembled.
2. Roof curb: 14 ga. [VA03-56] stl.
3. Dimensions in [] are millimeters.
4. Suggested hole location for field wiring through roof curb (holes to be supplied by field).
5. Pipe chases for auxiliary coil are not provided with unit. Chases must be field-cut.



DIMENSIONS*
(degrees and inches)

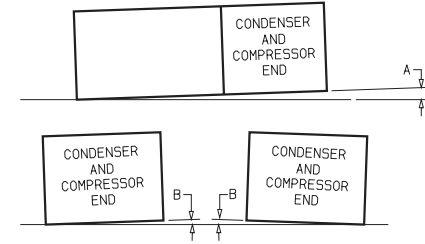
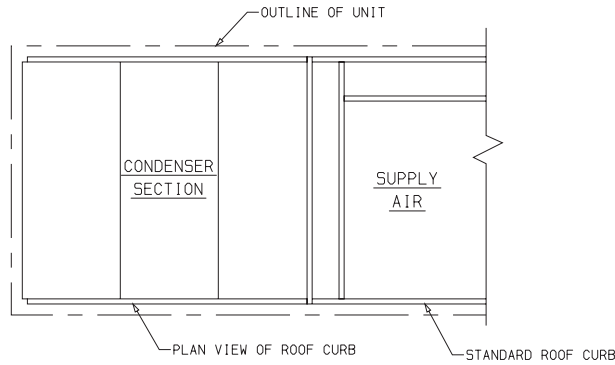
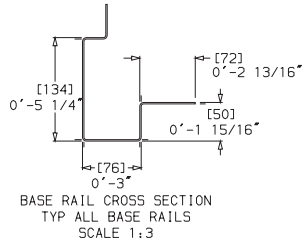
A		B	
Deg	in.	Deg	in.
1.0	2.0	.50	.75

UNIT LEVELING TOLERANCES
*From edge of unit to horizontal.

Fig. L — Roof Curb — 50JJX, JJY, JKX, JKY, JPX, JPY054,064

NOTES:

1. Roof curb is shipped disassembled.
2. Roof curb: 14 gage (VA03-56) steel.
3. Dimensions in [] are millimeters.



DIMENSIONS*
(degrees and inches)

A		B	
Deg	in.	Deg	in.
1.0	2.0	.50	.75

UNIT LEVELING TOLERANCES

*From edge of unit to horizontal.

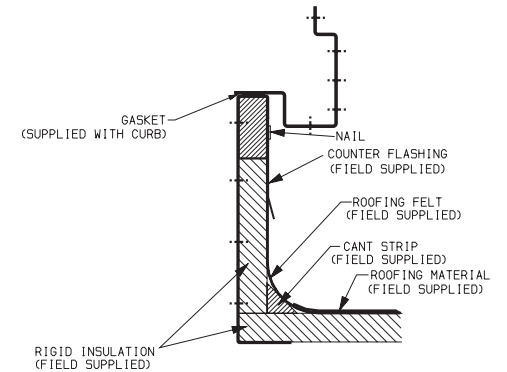
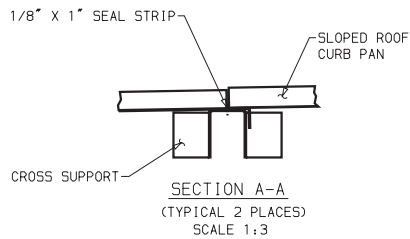
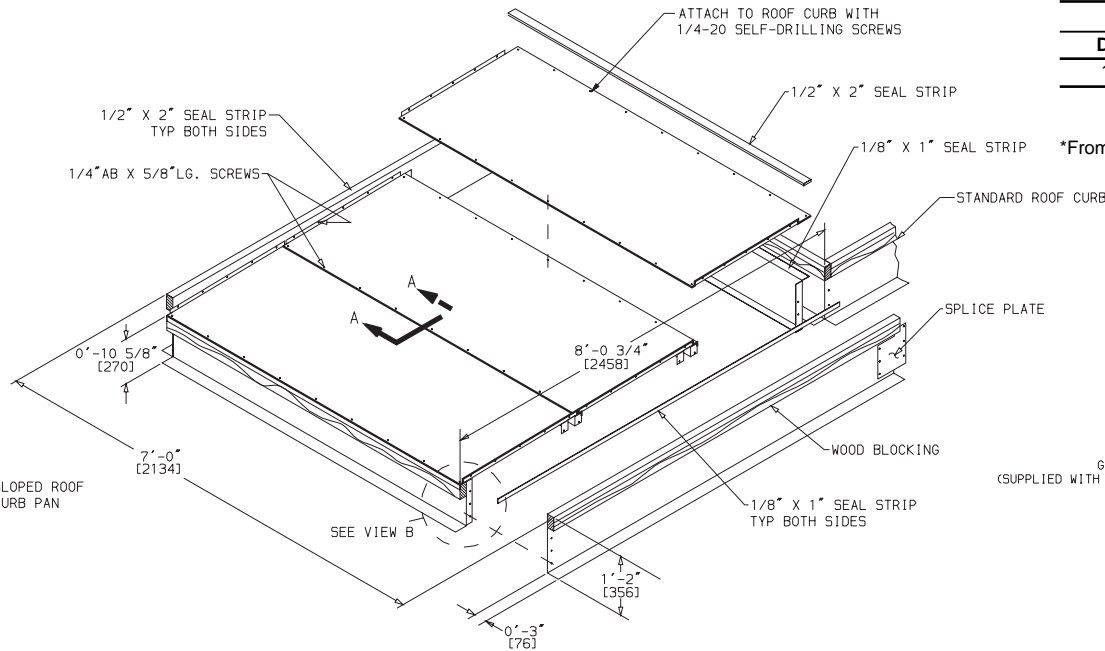
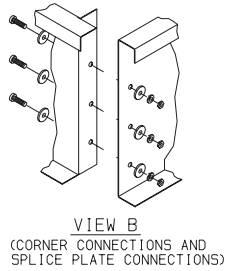
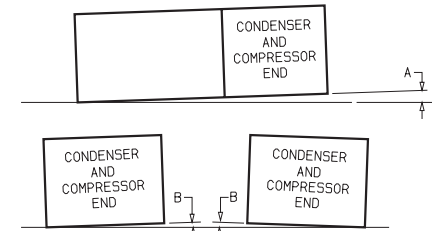
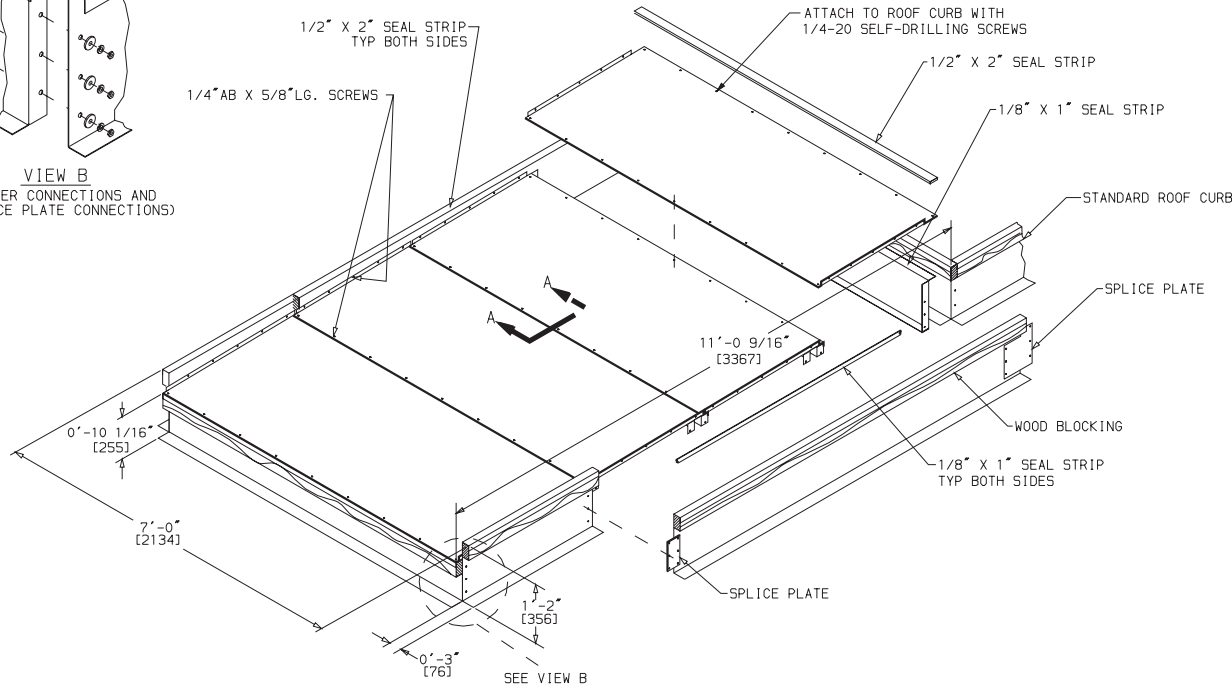
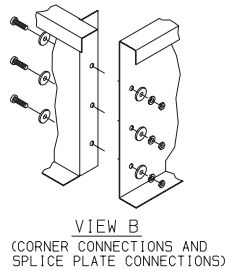
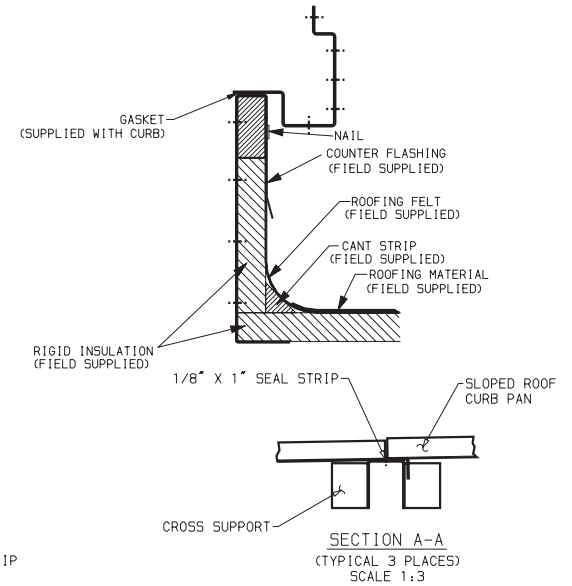
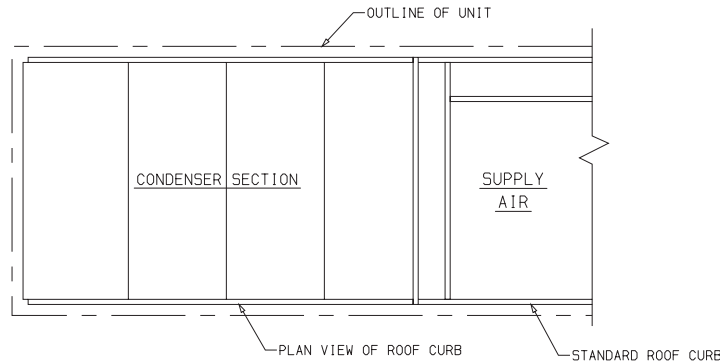
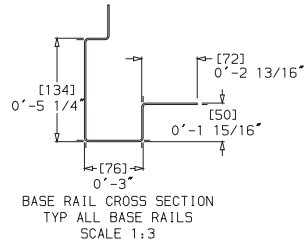


Fig. M — Condenser Section Roof Curb — 50FJX,FJY,FKX,FKY,FPX,FPY,JJX,JJY,JKX,JKY,JPX,JPY, Sizes 054 and 064

NOTES:

1. Roof curb is shipped disassembled.
2. Dimensions in [] are millimeters.
3. Roof curb: 14 gage (VA03-56) steel.
Roof curb pans, 16 gage (VA03-56) steel.



DIMENSIONS*
(degrees and inches)

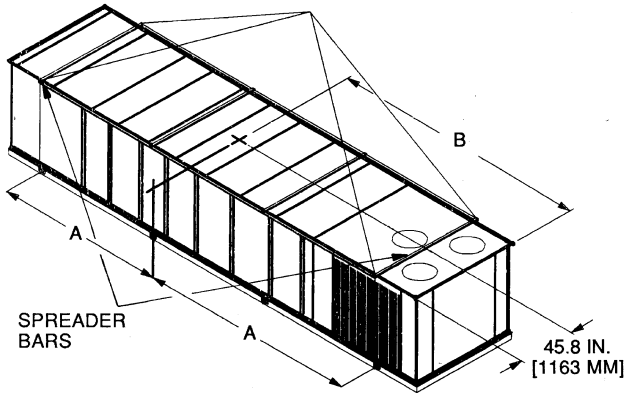
A		B	
Deg	in.	Deg	in.
1.0	2.0	.50	.75

UNIT LEVELING TOLERANCES

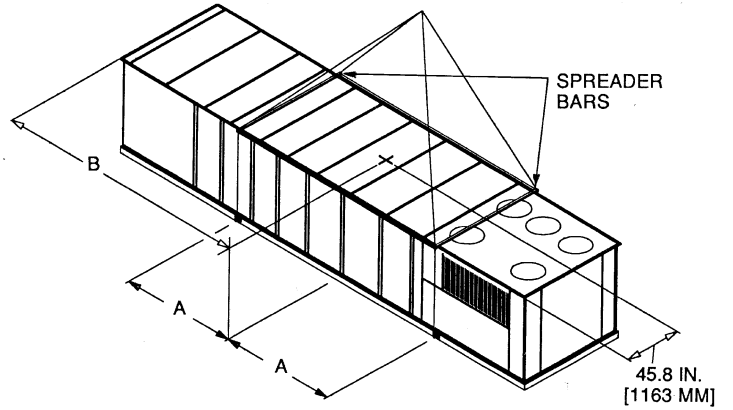
*From edge of unit to horizontal.

Fig. N — Condenser Section Roof Curb — 50FJX,FJY,FKX,FKY,FPX,FPY, Size 074

SIZES 034-048



SIZES 054 - 074



NOTES:

- Sizes 034-048: Rig with 4 cables and spread with two 95 in. (2413 mm) and 2 'A + A' long spreader bars.
 Sizes 054-074: Rig with 4 cables and spread with two 95 in. (2413 mm) and 2 'A + A' long spreader bars.
- Center of gravity includes economizer.

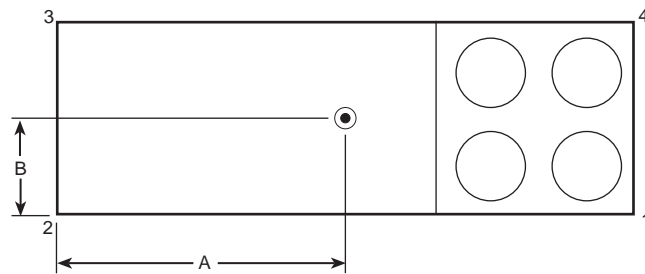
⚠ CAUTION

- All panels must be in place when rigging.
- Unit is not designed for handling by forklift truck.

RIGGING WEIGHTS AND DIMENSIONS

MODEL NO. (EXTENDED CHASSIS UNITS)	WEIGHT		A		B		ECONOMIZER	
	Lb	Kg	in.	mm	in.	mm	Lb	Kg
50FJX,FJY,FKX,FKY,FPX,FPY034	5970	2714	83.23	2114	159.21	4044	300	136
50FJX,FJY,FKX,FKY,FPX,FPY038	6150	2790	83.23	2114	161.02	4090	300	136
50FJX,FJY,FKX,FKY,FPX,FPY044	6620	3009	92.64	2353	189.88	4823	300	136
50FJX,FJY,FKX,FKY,FPX,FPY048	6740	3057	92.64	2353	190.98	4851	300	136
50FJX,FJY,FKX,FKY,FPX,FPY054	8250	3750	126.50	3213	238	6045	530	240.9
50FJX,FJY,FKX,FKY,FPX,FPY064	8550	3886	126.50	3213	238	6045	530	240.9
50FJX,FJY,FKX,FKY,FPX,FPY074	8970	4077	109.50	2782	255	6477	530	240.9
50JJX,JJY,JKX,JKY,JPX,JPY034	6470	2934	95.83	2434	173.94	4418	300	136
50JJX,JJY,JKX,JKY,JPX,JPY038	6650	3016	95.83	2434	176.14	4474	300	136
50JJX,JJY,JKX,JKY,JPX,JPY044	7120	3229	105.24	2673	205.16	5211	300	136
50JJX,JJY,JKX,JKY,JPX,JPY048	7240	3284	105.24	2673	206.26	5239	300	136
50JJX,JJY,JKX,JKY,JPX,JPY054	8800	3990	136.61	3470	251.70	6393	530	240.9
50JJX,JJY,JKX,JKY,JPX,JPY064	9100	4127	136.61	3470	251.70	6393	530	240.9

Fig. O — Rigging Label



UNIT		UNIT CORNER WEIGHTS (lbs)					CENTER OF GRAVITY	
		1	2	3	4	Total	A ft-in.	B ft-in.
50FJX,FJY 50FKX,FKY 50FPX,FPY	034	1864	1268	1271	1867	6270	13- 3 ¹ / ₄	3-9 ¹³ / ₁₆
	038	1922	1287	1290	1951	6450	13- 5	3-9 ¹³ / ₁₆
	044	2070	1387	1389	2074	6920	15- 9 ⁷ / ₈	3-9 ¹³ / ₁₆
	048	2115	1412	1414	2099	7040	15-11	3-9 ¹³ / ₁₆
	054	2381	2005	2009	2385	8780	19-10	3-9 ¹³ / ₁₆
	064	2461	2074	2078	2467	9080	19-10	3-9 ¹³ / ₁₆
50JJX,JJY 50JKX,JKY 50JPX,JPY	034	1989	1393	1396	1992	6770	14- 5 ¹⁵ / ₁₆	3-9 ¹³ / ₁₆
	038	2043	1413	1417	2077	6950	14- 8 ¹ / ₈	3-9 ¹³ / ₁₆
	044	2195	1512	1514	2199	7420	17- 1 ¹ / ₈	3-9 ¹³ / ₁₆
	048	2240	1537	1539	2224	7540	17- 2 ¹ / ₄	3-9 ¹³ / ₁₆
	054	2518	2143	2146	2523	9330	20-11 ¹¹ / ₁₆	3-9 ¹³ / ₁₆
	064	2598	2212	2215	2605	9630	20-11 ¹¹ / ₁₆	3-9 ¹³ / ₁₆

NOTE: Weights include economizer.

Fig. P — Unit Center of Gravity and Corner Weights

Table B — Supply Fan Drive Data

HP	SHAFT DIA.	SPEED (rpm)	MOTOR SHEAVE	MOTOR PITCH DIA.	WHEEL SHEAVE	WHEEL PITCH DIA.	QUANTITY ...BELT
Sizes 034-048							
7.5	1 ³ / ₈	438	2BK36	3.4	2B5V136	13.6	2...BX60
10	1 ³ / ₈	549	2B5V42	4.3	2B5V136	13.7	2...5VX630
15	1 ⁵ / ₈	626	2B5V48	4.9	2B5V136	13.7	2...5VX630
20	1 ⁵ / ₈	703	2B5V54	5.5	2B5V136	13.7	2...5VX630
Sizes 054-074							
15	1 ⁵ / ₈	575	2B5V44	4.5	2B5V136	13.7	2...5VX1230
20	1 ⁵ / ₈	651	2B5V50	5.1	2B5V136	13.7	2...5VX1230
25	1 ⁷ / ₈	703	2B5V54	5.5	2B5V136	13.7	2...5VX1230
30	1 ⁷ / ₈	711	2B5V62	5.9	2B5V154	15.5	2...5VX1250