

Supplement

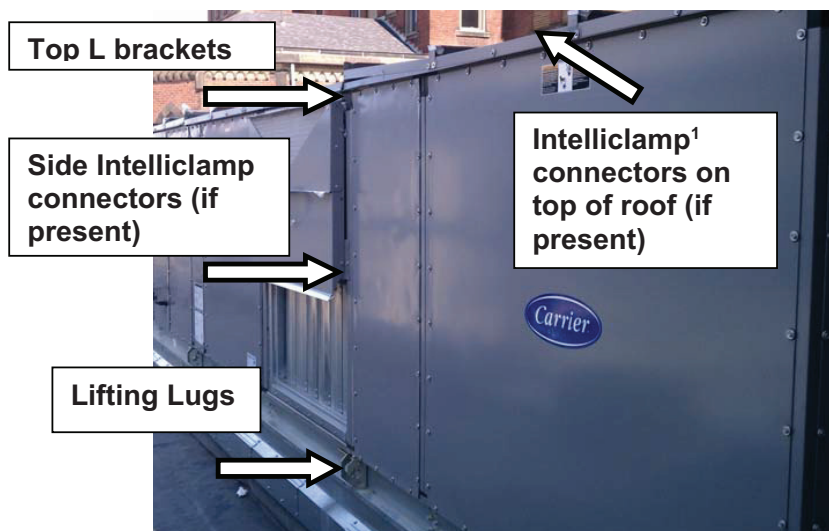
⚠ WARNING

Refer to the 39M Installation manual for complete installation information and safety instructions.

Read the entire Installation manual before starting the installation and follow all warnings or cautions included in the manual and attached to the unit. Failure to do so could result in personal injury or equipment damage.

⚠ CAUTION

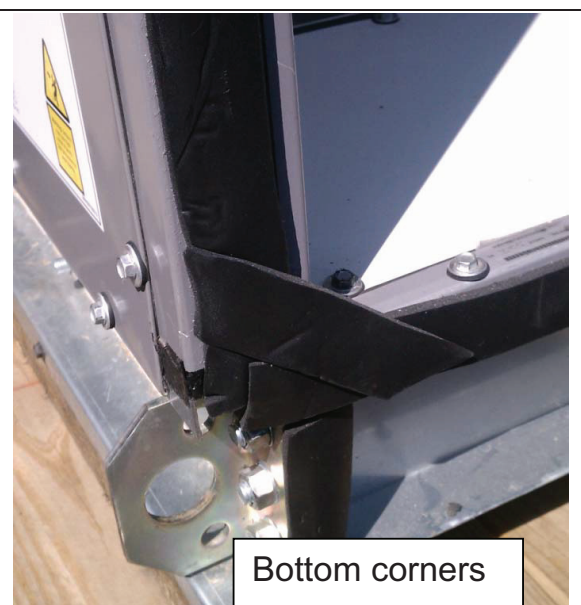
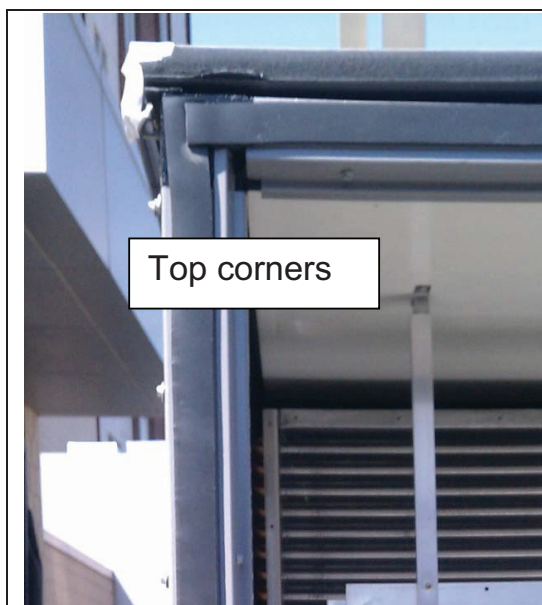
Failure to assemble the units according to the procedures set forth below is considered improper installation and abuse and may not only negatively impact the weathertight performance of the unit, but may also negatively affect the Carrier warranty.



- Required Tools:**
- (2) 1/2-in. wrenches
 - (2) 3/8-in. wrenches
 - (1) Caulking gun and caulk
 - (1) 6 mm hex wrench for Intelliclamp connectors
 - (1) Tape measure

¹ Intelliclamp is a registered trademark of Industrias.

IMPORTANT: Verify that all factory-installed gasketing at the shipping split joint is installed as shown below.





STEP 1

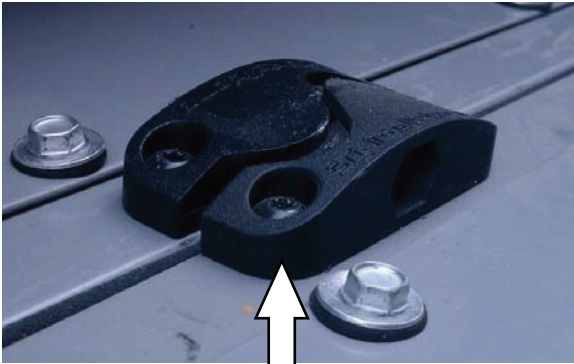
Set upstream section on roof curb first, followed by downstream section. Sections should be within $\frac{1}{2}$ in. of each other and their outer surfaces flush.

Insert 8-in. screw, washer and nut into top hole in lifting lugs. Do not fully tighten. Repeat on other side of AHU.



STEP 2

Align top L bracket, insert 8-in. screw, washer and nut into bracket but do not fully tighten. Roof panels may need to be unbolted to access the brackets. Repeat on other side of AHU.

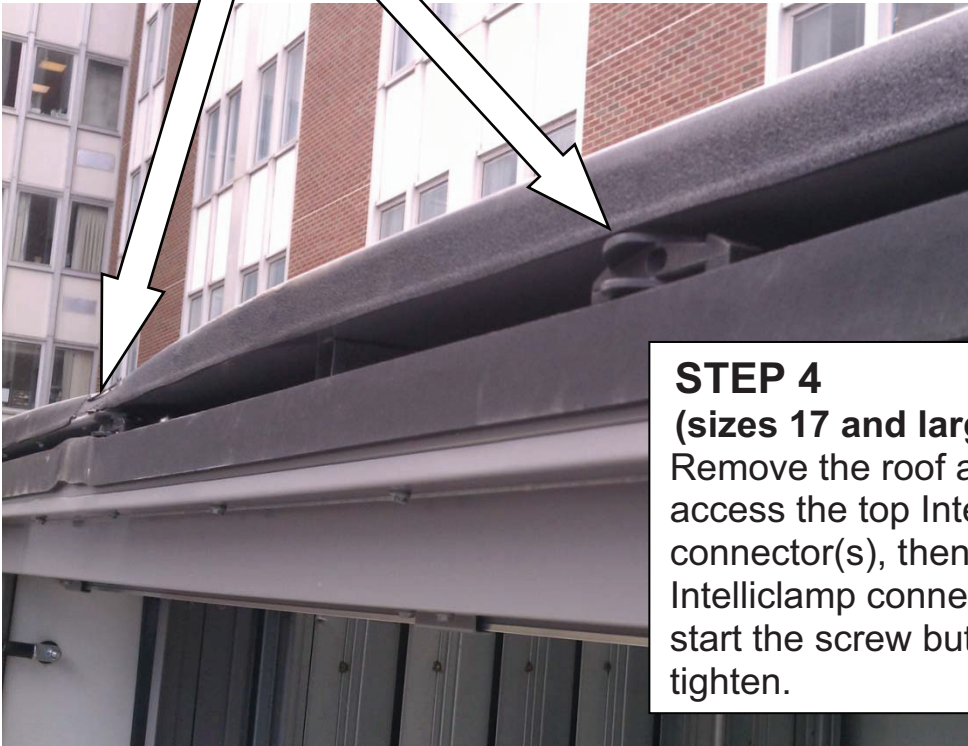


STEP 3

(sizes 36 and larger only)

On side of unit, align Intelliclamp connector, start the screw, but do not fully tighten. Repeat on other side of AHU.

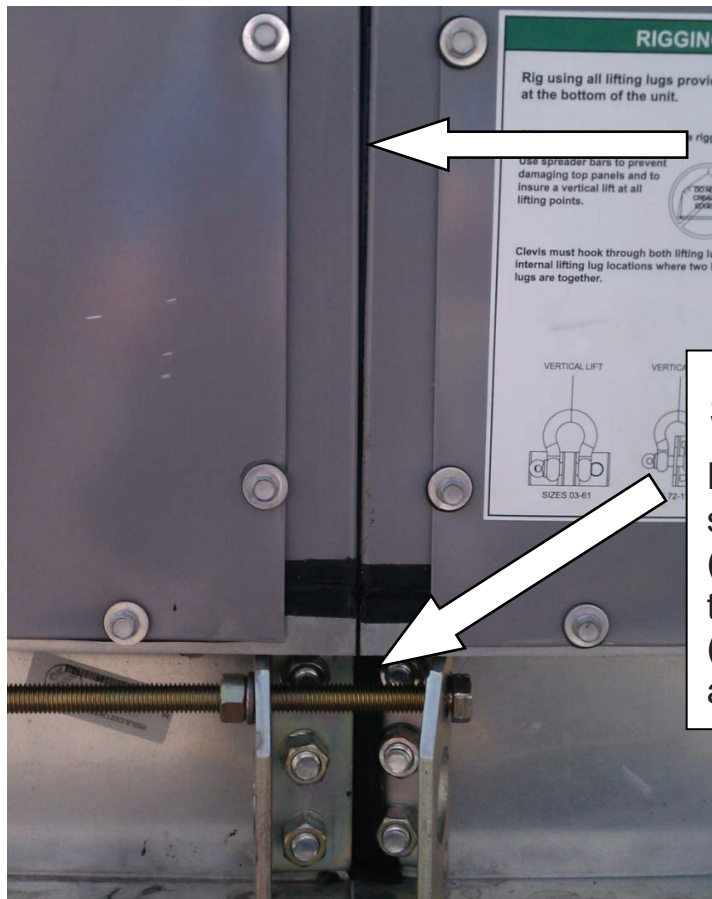
Intelliclamp
connectors



STEP 4

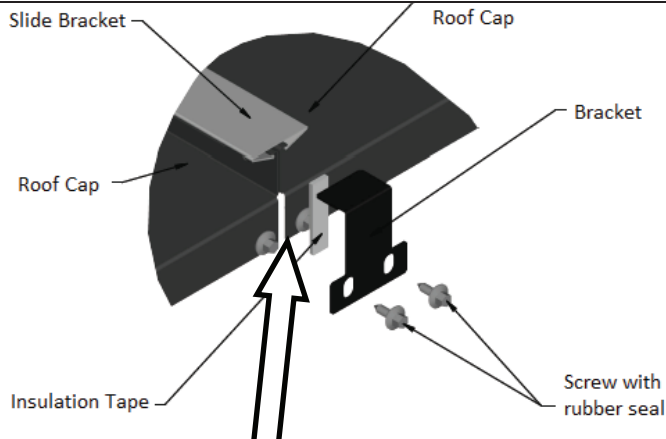
(sizes 17 and larger only)

Remove the roof at the split to access the top Intelliclamp connector(s), then align the Intelliclamp connector(s) and start the screw but do not fully tighten.



Gasket should be no more than 1/8-in. thick.

STEP 5
Fully tighten all bolts starting from the baserails (STEP 1) and moving to the side then the top (STEP 3 and then STEP 2 and STEP 4).



STEP 6
Assemble all roof brackets provided and caulk roof corners as shown.



STEP 7
Fully caulk shipping split joint from inside of roof bracket down and around baserail lip in a continuous bead.